

MOTU MIDI Express 128

Installation under Windows 7 and Windows XP

Contents

Overview.....	2
Powered 4-Port USB 3.0 Hub	3
Driver Download	5
Windows 7 Professional (64-bit, SP1) Installation Steps.....	6
Connect MOTU MIDI Express 128 Unit #1	9
Connect MOTU MIDI Express 128 Unit #2	17
Connect MOTU MIDI Express 128 Unit #3	20
Windows XP Professional (32-bit, SP3) Installation Steps	24
Connect MOTU MIDI Express 128 Unit #1	26
Connect MOTU MIDI Express 128 Unit #2	39
Connect MOTU MIDI Express 128 Unit #3	46

Overview

This document shows how to install 3 MOTU MIDI Express 128 units under Windows 7 Professional (64-bit, SP1) and Windows XP Professional (32-bit, SP3).



Powered 4-Port USB 3.0 Hub

Atolla powered 4-Port USB 3.0 Hub, 5V 3A

<https://www.amazon.com/dp/B07MQDJLSF/>






Label the Ports.



Driver Download

https://cdn-data.motu.com/downloads/midi/MIDI_Installer-Win-110806.zip

Name	Date modified	Type	Size
 SetupMIDI.exe	8/5/2011 6:26 PM	Application	32,857 KB

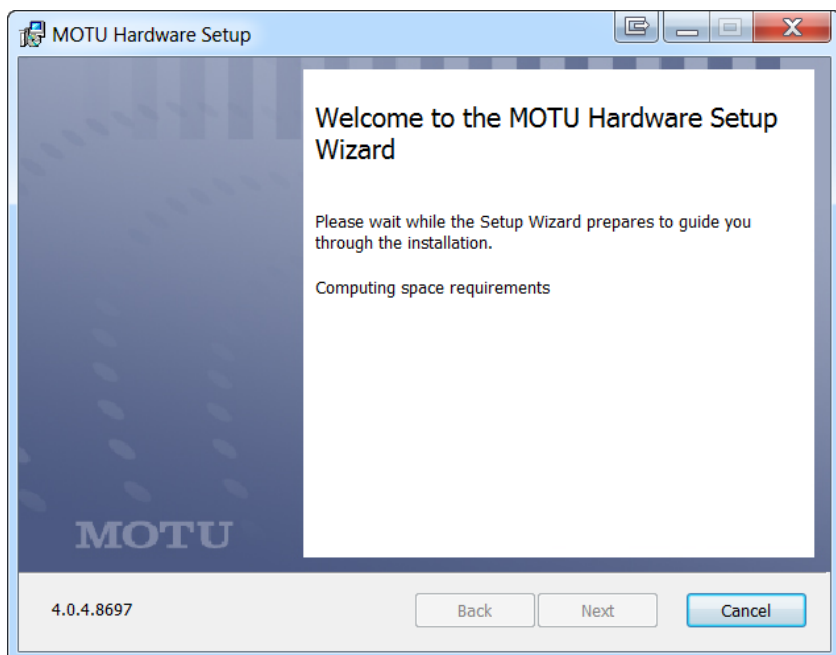
Note: You must install this driver before connecting the MOTU MIDI Express 128 unit.

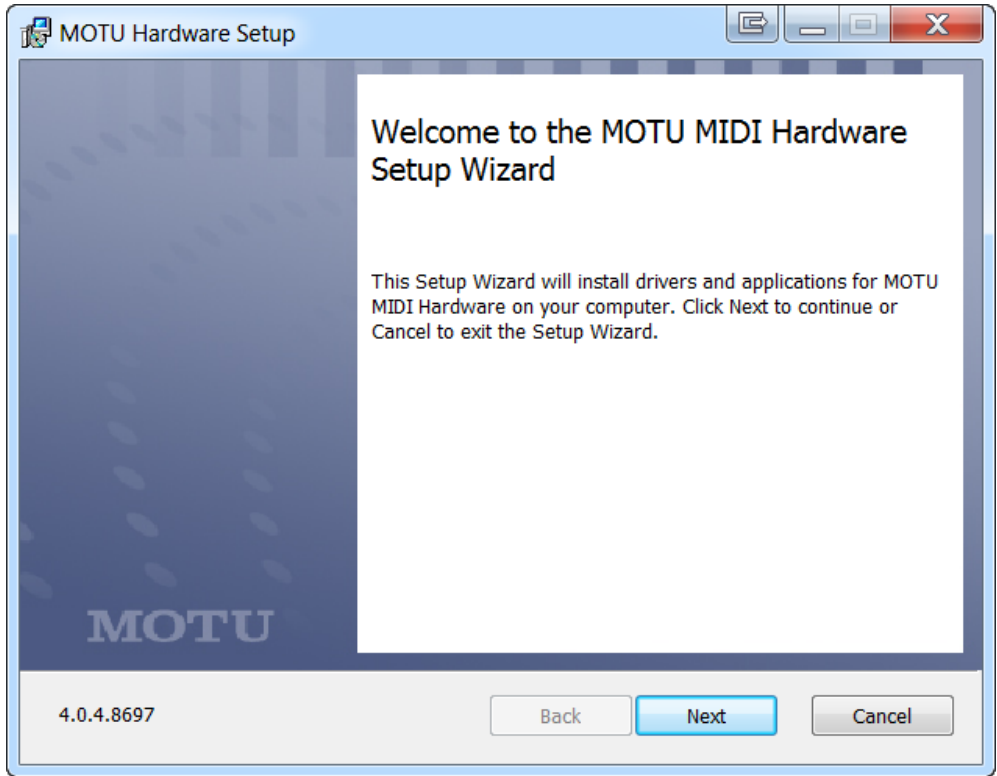
Windows 7 Professional (64-bit, SP1) Installation Steps

Disconnect all USB devices except your keyboard and mouse.

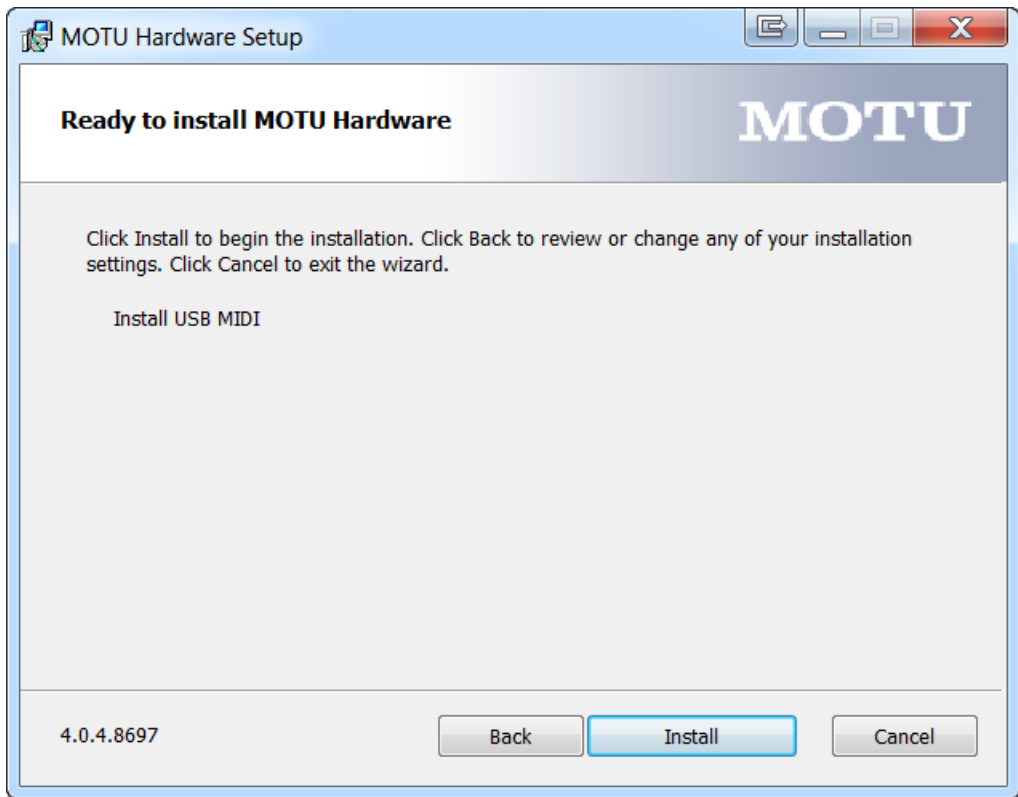
Do not connect the MOTU MIDI Express 128 unit yet!

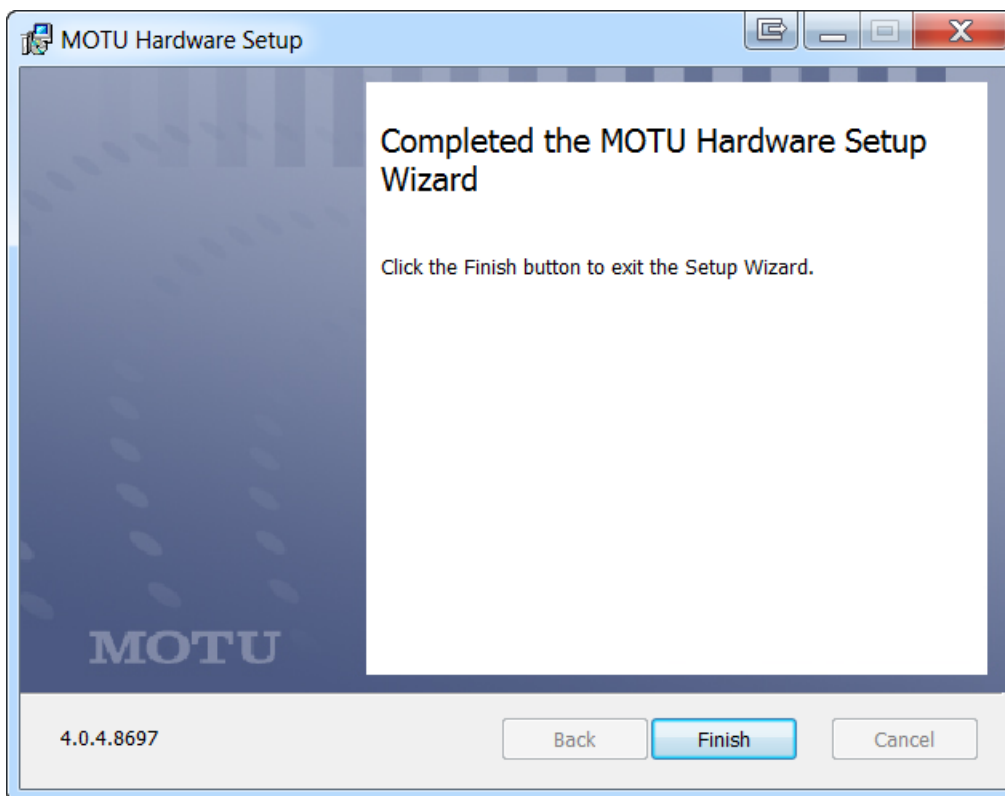
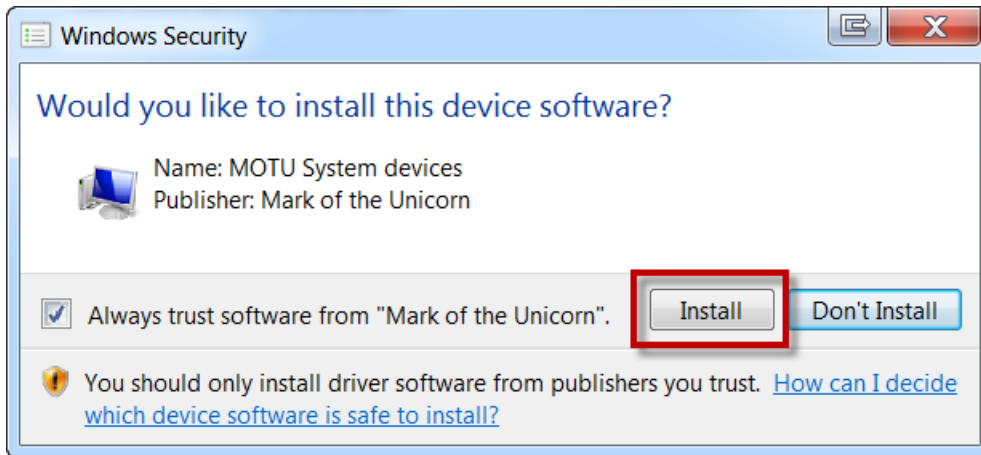
Run **SetupMIDI.exe**





This will install MOTU USB MIDI version 4.0.4.8697





Finish

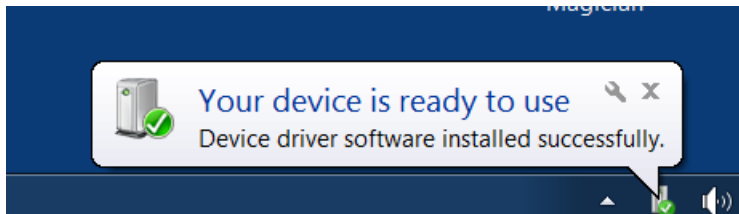
Connect MOTU MIDI Express 128 Unit #1

Note: The MOTU MIDI Express 128 device needs to be plugged into a powered USB HUB.

Use the Atolla 4-Port Powered USB 3.0 Hub

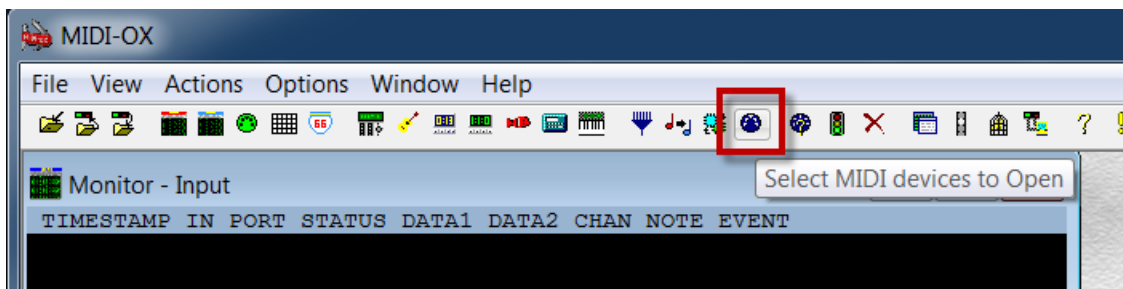
Connect the MOTU MIDI Express 128 device to Port #1 on the USB Hub.

This will install the MOTU MIDI USB Driver.



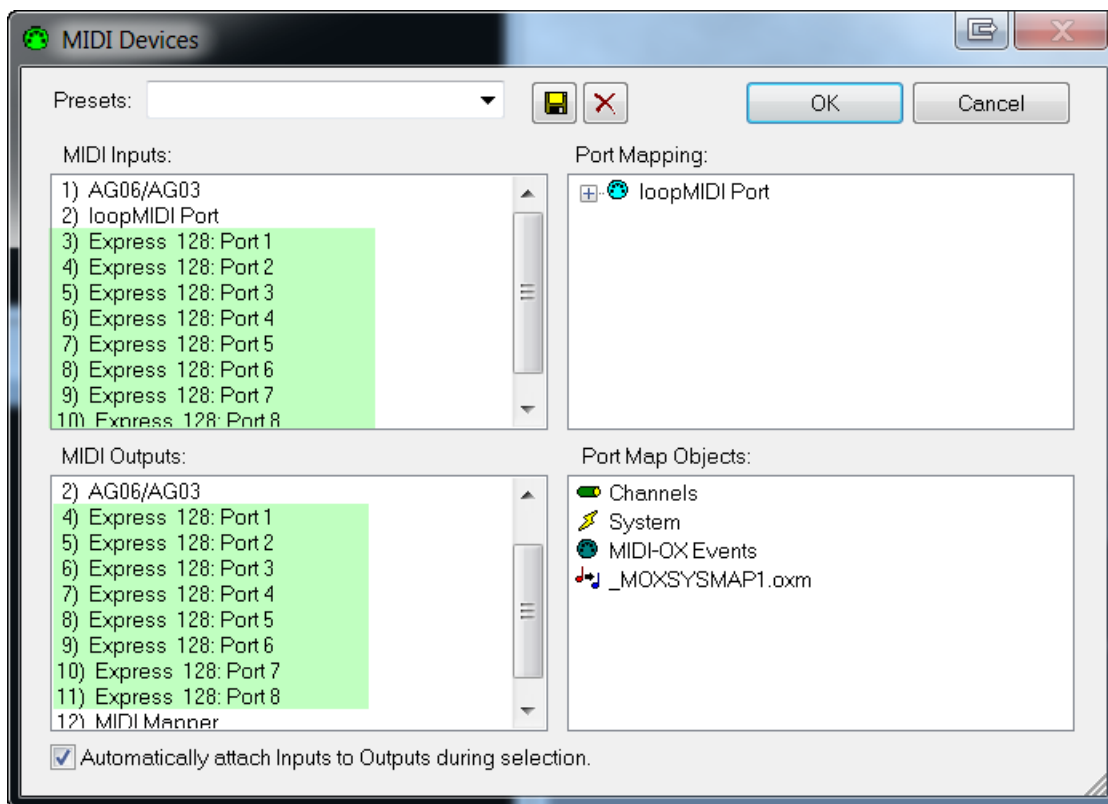
The green LED marked COMPUTER I/O will light up on the front panel of the device.

Open MIDI OX

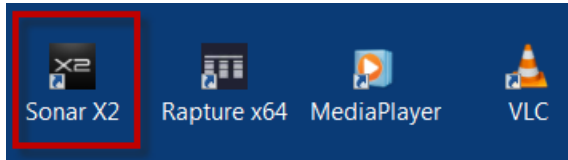


You will see these 8 MIDI IN/OUT Ports:

- Express 128: Port 1
- Express 128: Port 2
- Express 128: Port 3
- Express 128: Port 4
- Express 128: Port 5
- Express 128: Port 6
- Express 128: Port 7
- Express 128: Port 8



Launch Sonar X2



Edit | Preferences | MIDI | Devices

Preferences

Audio

- Devices
- Driver Settings
- Playback and Recording
- Audio Profiles
- Configuration File
- Sync and Caching

MIDI

- Devices**
- Instruments
- Control Surfaces
- Playback and Recording

File

- Folder Locations
- Audio Data
- VST Settings
- Initialization File
- Advanced

Select MIDI input and output devices.

Check/uncheck to select/deselect MIDI inputs and outputs.
Click on a friendly name to edit it.

Inputs

Friendly Name	Device Name
<input type="checkbox"/> AG06/AG03	AG06/AG03
<input type="checkbox"/> loopMIDI Port	loopMIDI Port
<input type="checkbox"/> Express 128: Port 1	Express 128: Port 1
<input type="checkbox"/> Express 128: Port 2	Express 128: Port 2
<input type="checkbox"/> Express 128: Port 3	Express 128: Port 3
<input type="checkbox"/> Express 128: Port 4	Express 128: Port 4
<input type="checkbox"/> Express 128: Port 5	Express 128: Port 5
<input type="checkbox"/> Express 128: Port 6	Express 128: Port 6

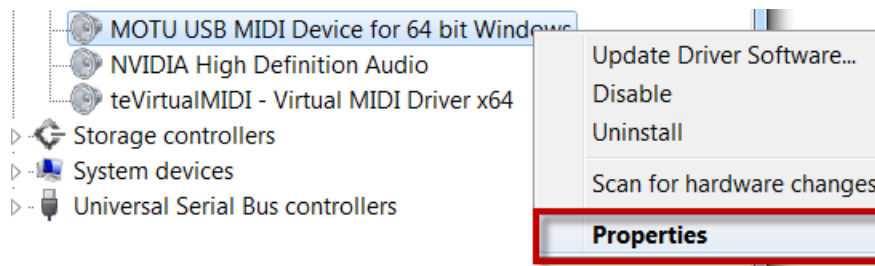
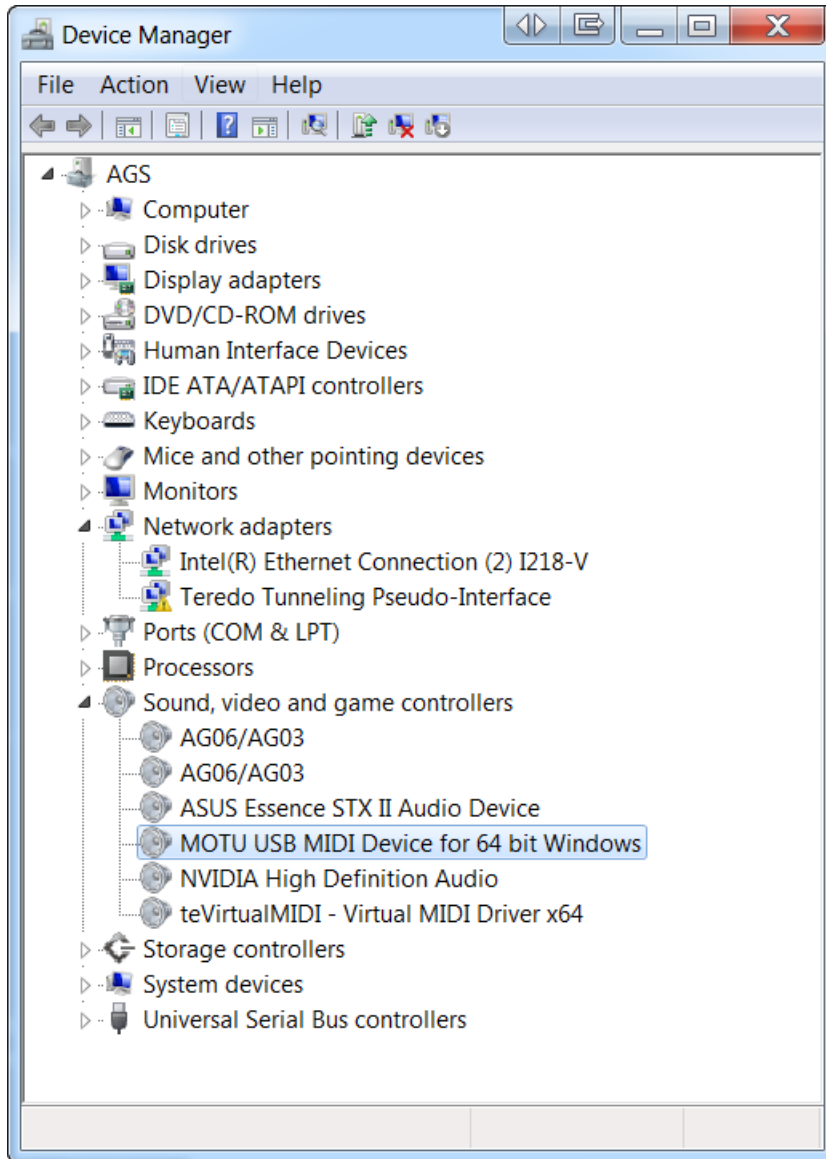
Outputs

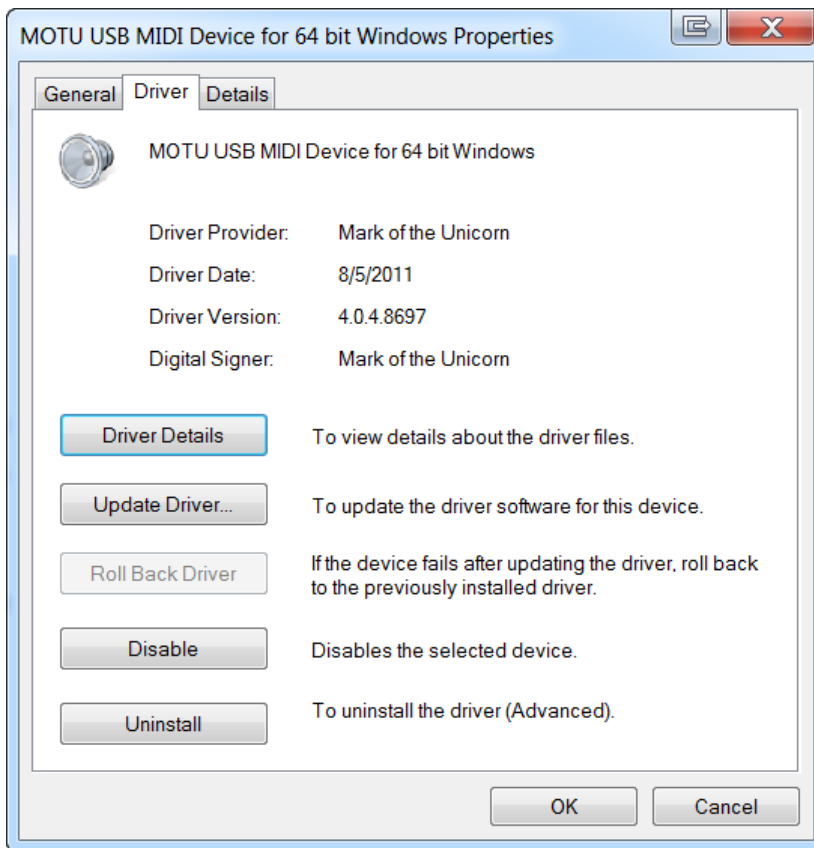
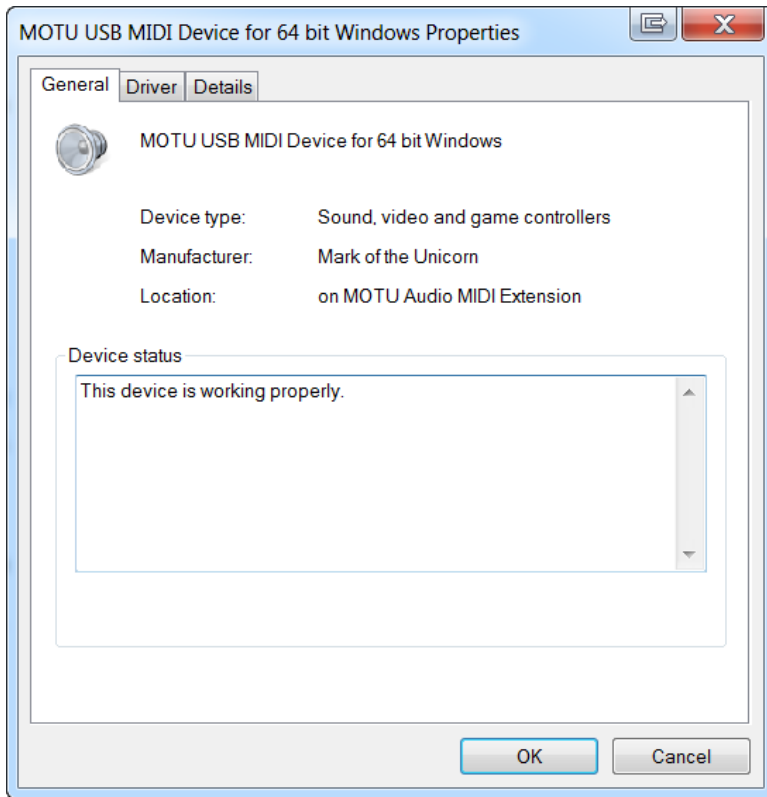
Friendly Name	Device Name
<input type="checkbox"/> AG06/AG03	AG06/AG03
<input type="checkbox"/> loopMIDI Port	loopMIDI Port
<input type="checkbox"/> Express 128: Port 1	Express 128: Port 1
<input type="checkbox"/> Express 128: Port 2	Express 128: Port 2
<input type="checkbox"/> Express 128: Port 3	Express 128: Port 3
<input type="checkbox"/> Express 128: Port 4	Express 128: Port 4
<input type="checkbox"/> Express 128: Port 5	Express 128: Port 5
<input type="checkbox"/> Express 128: Port 6	Express 128: Port 6

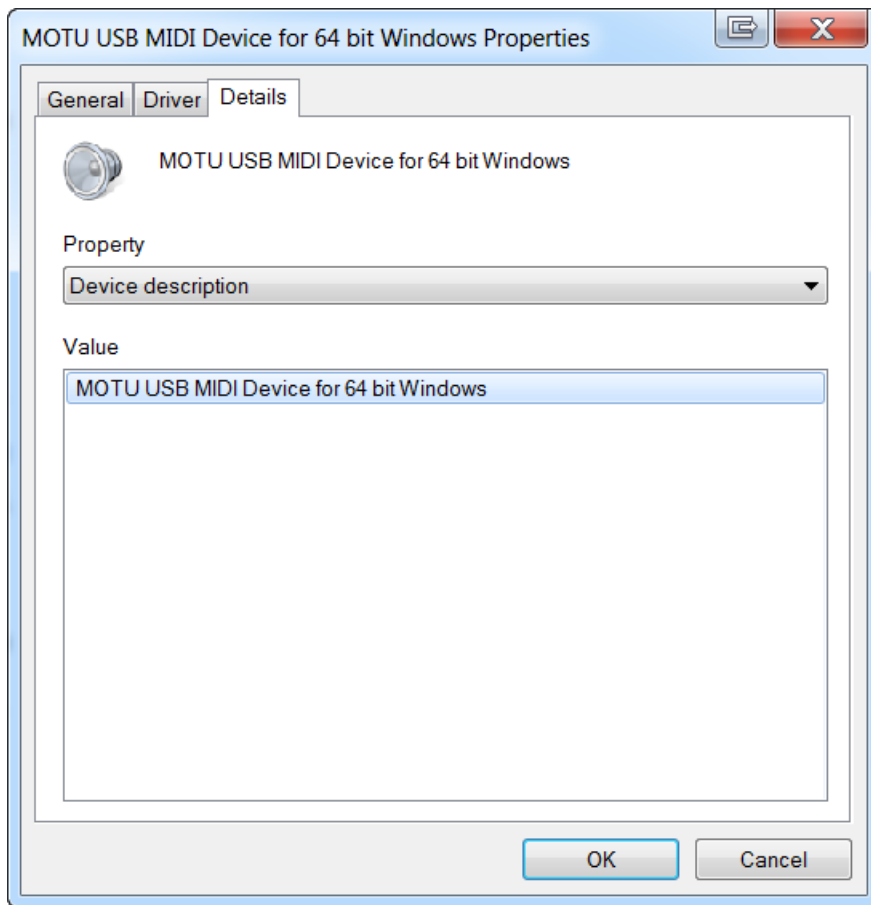
Use friendly names to represent MIDI devices.
 Warn about no MIDI devices.

Device Manager | Sound, video and game controllers

MOTU USB MIDI Device for 64 bit Windows







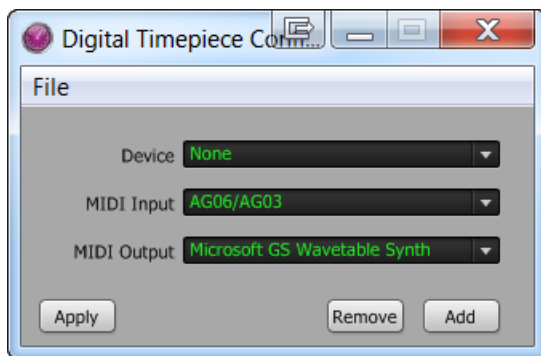
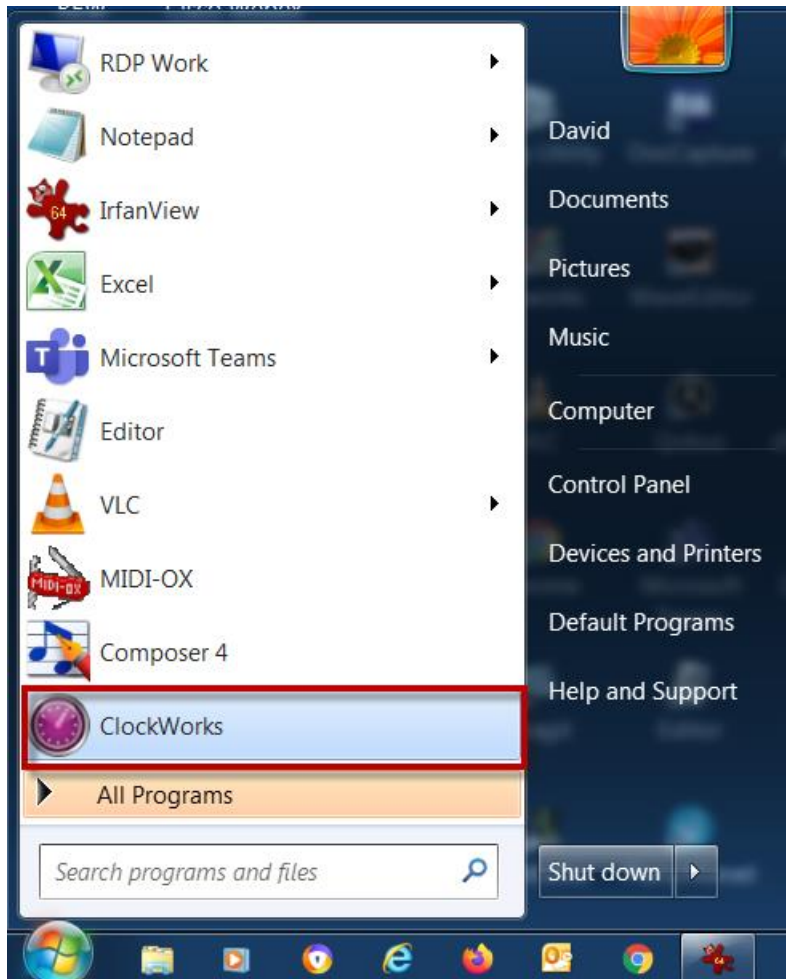
Programs and Features

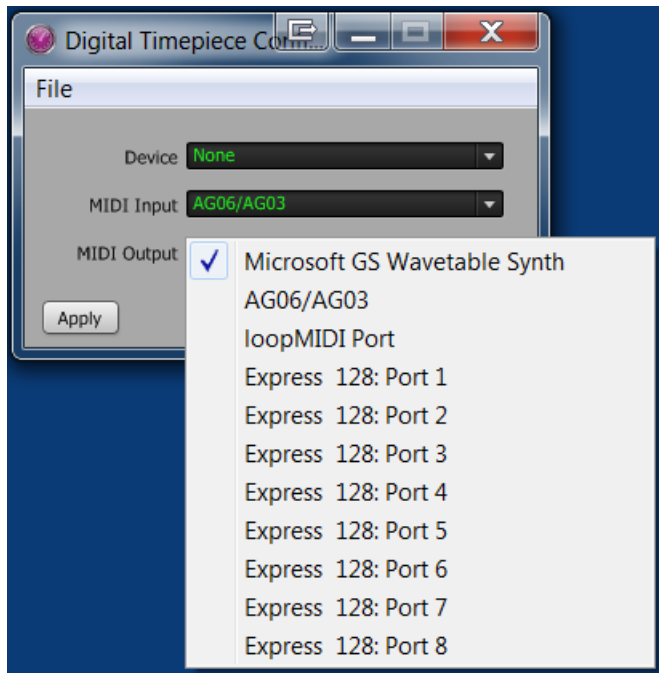
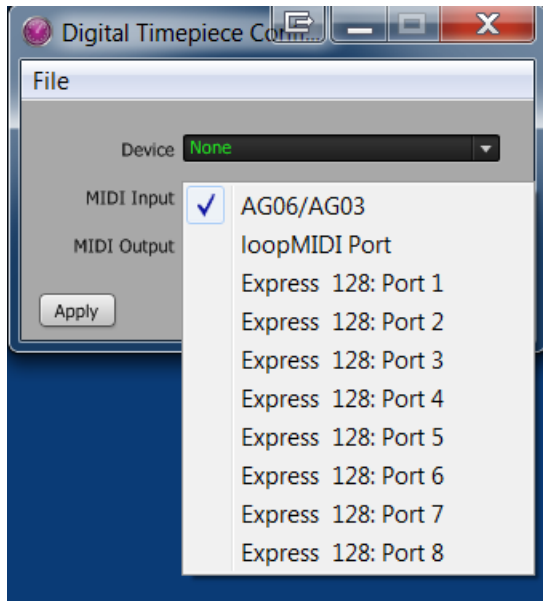
Uninstall or change a program

To uninstall a program, select it from the list and then click Uninstall, Change, or Repair.

Name	Publisher	Installed On	Size	Version
MIDI-OX	MIDI-OX Computing	7/29/2021	1.99 MB	7.02.372
MiniTool Partition Wizard Home Edition 8.1.1	MiniTool Solution Ltd.	6/22/2020	57.2 MB	
MOTU Hardware	MOTU	9/28/2021	2.02 MB	4.0.4.8697
Mozilla Firefox (x64 en-US)	Mozilla	9/16/2021	205 MB	92.0
Mozilla Maintenance Service	Mozilla	9/16/2021	256 KB	92.0.0.7916

This installs ClockWorks

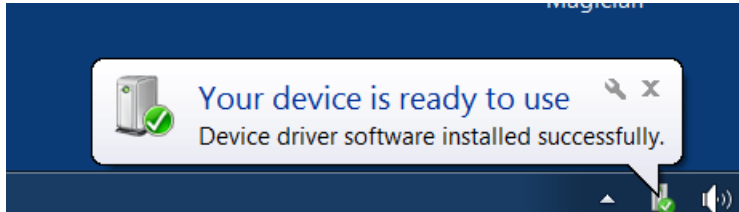




Connect MOTU MIDI Express 128 Unit #2

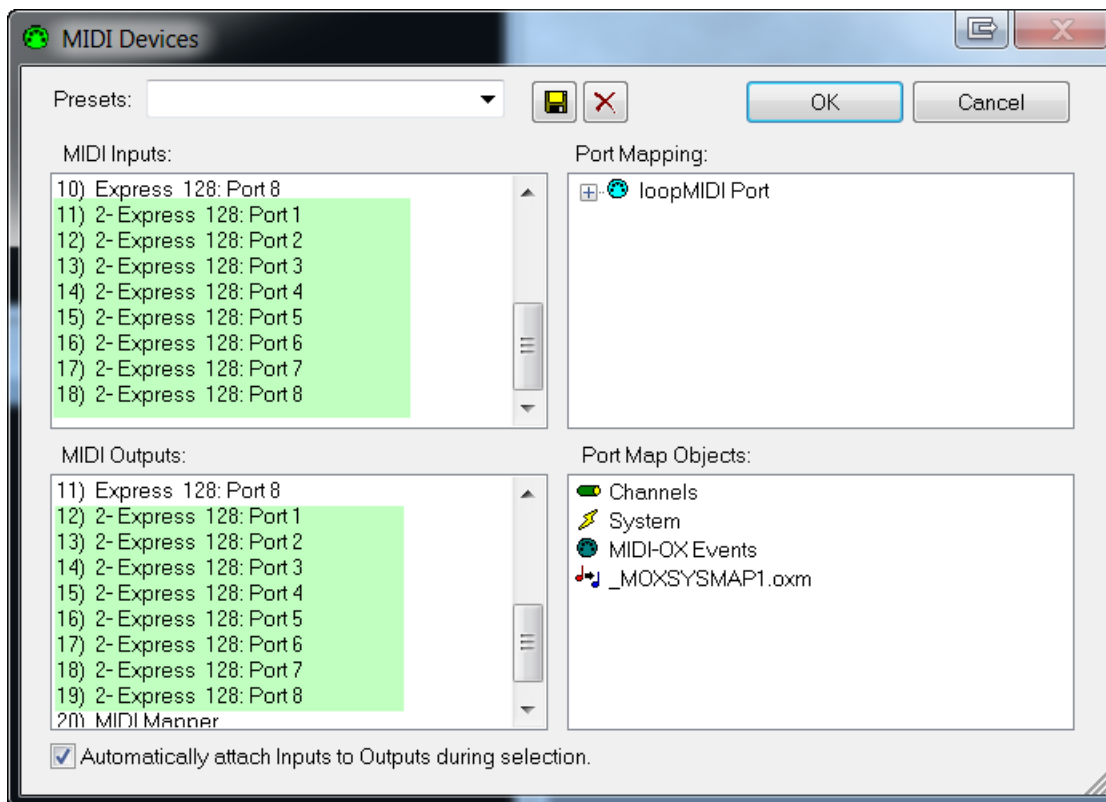
Connect the 2nd unit to Port #2 on the powered USB 3.0 Hub

You will get this message:



Launch MIDI OX

You will see these additional 8 MIDI IN/OUT Ports

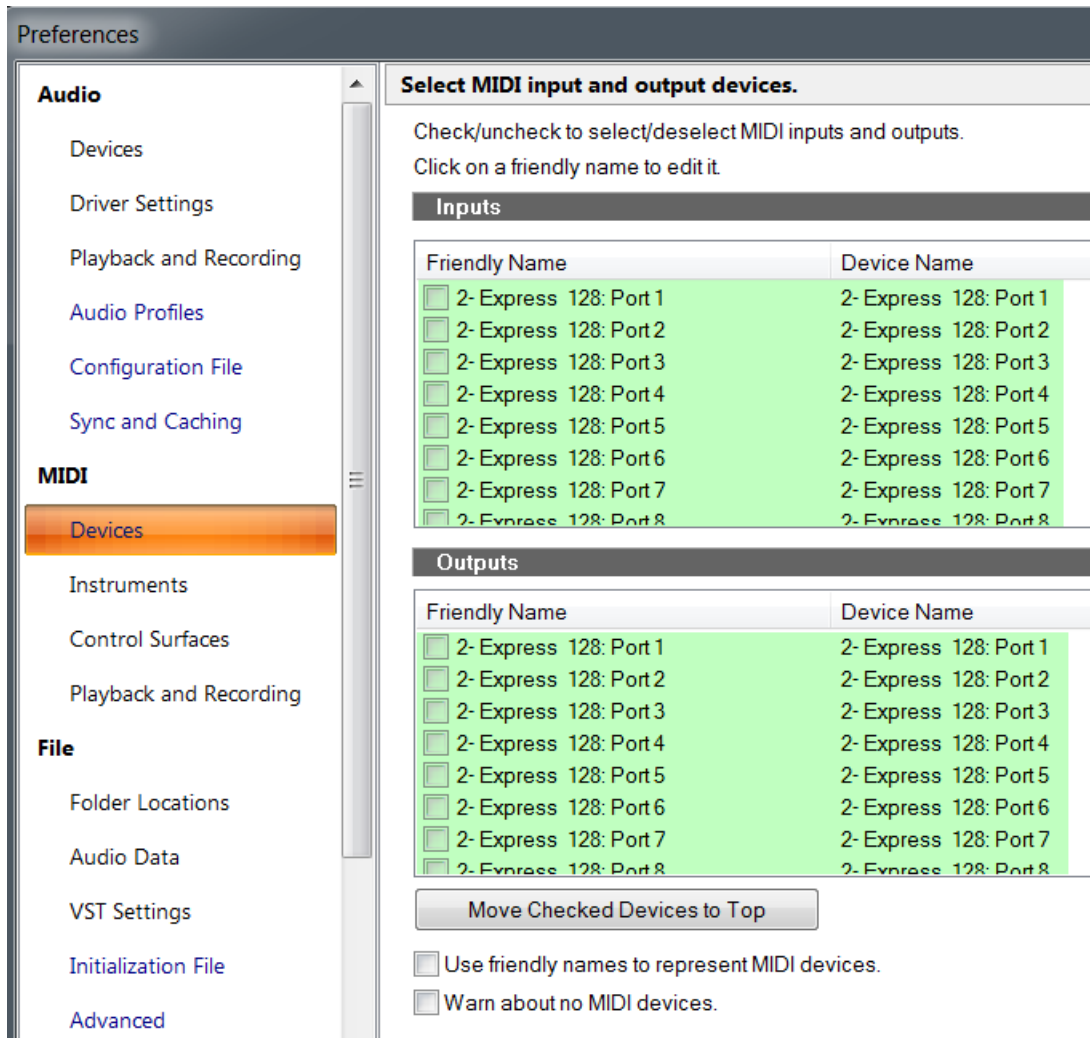


Launch Sonar X2

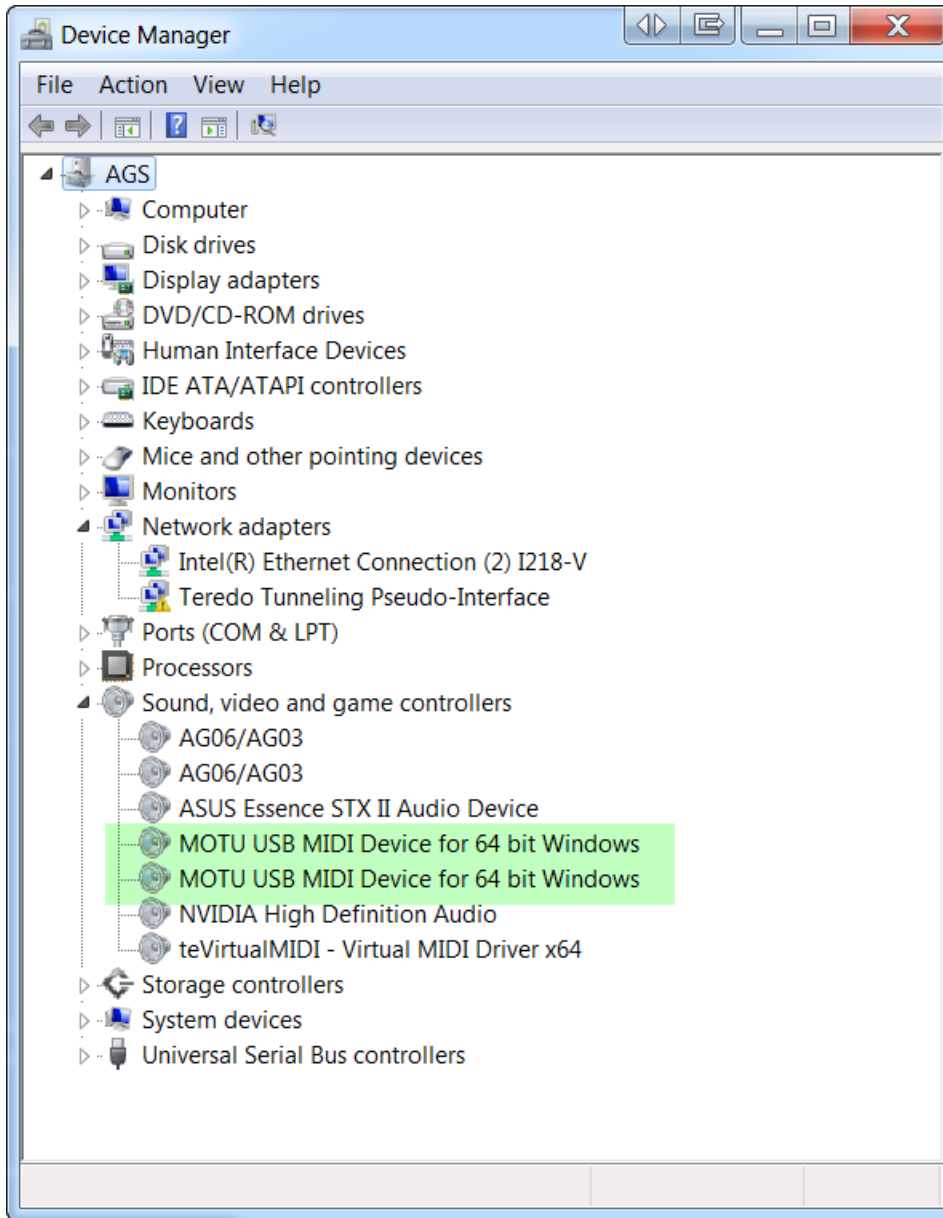
Edit | Preferences | MIDI | Devices

You will see these additional 8 MIDI IN/OUT Ports:

- 2-Express 128: Port 1
- 2-Express 128: Port 2
- 2-Express 128: Port 3
- 2-Express 128: Port 4
- 2-Express 128: Port 5
- 2-Express 128: Port 6
- 2-Express 128: Port 7
- 2-Express 128: Port 8



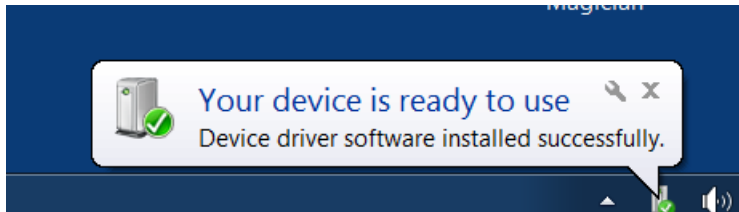
Device Manager



Connect MOTU MIDI Express 128 Unit #3

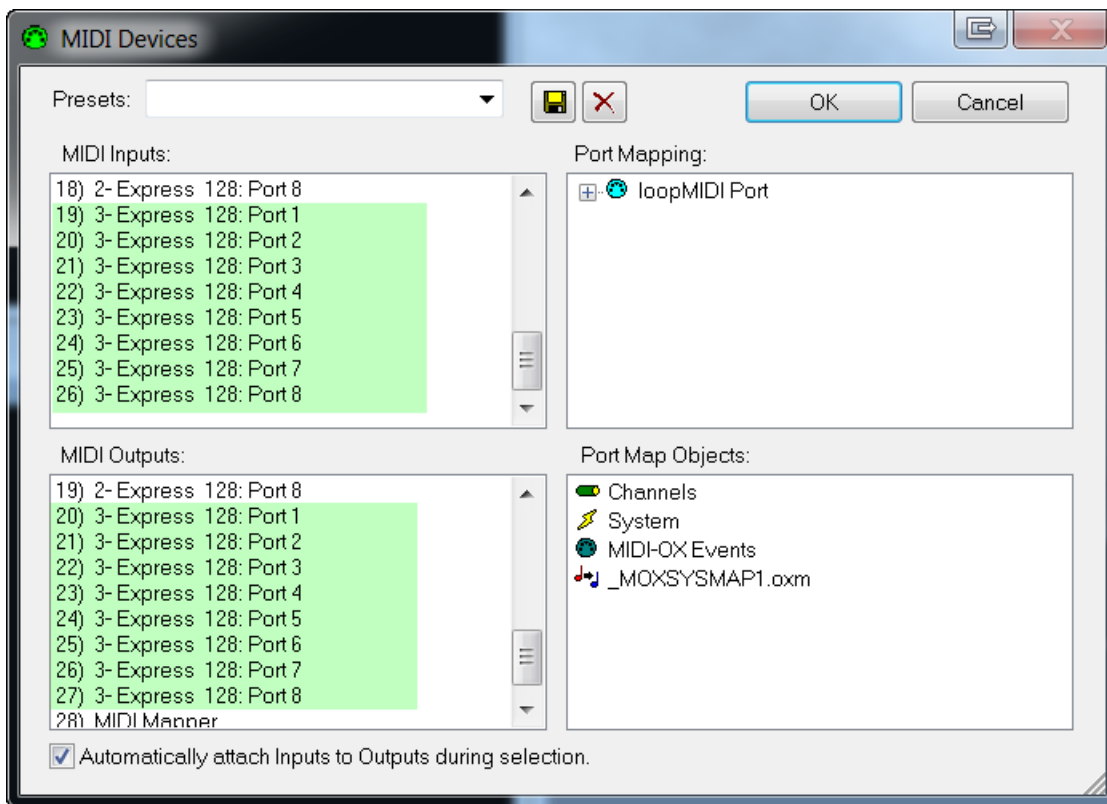
Connect the 3rd unit to Port #3 of the powered USB 3.0 Hub.

You will get this message:



Launch MIDI OX

You will see these additional 8 MIDI IN/OUT Ports

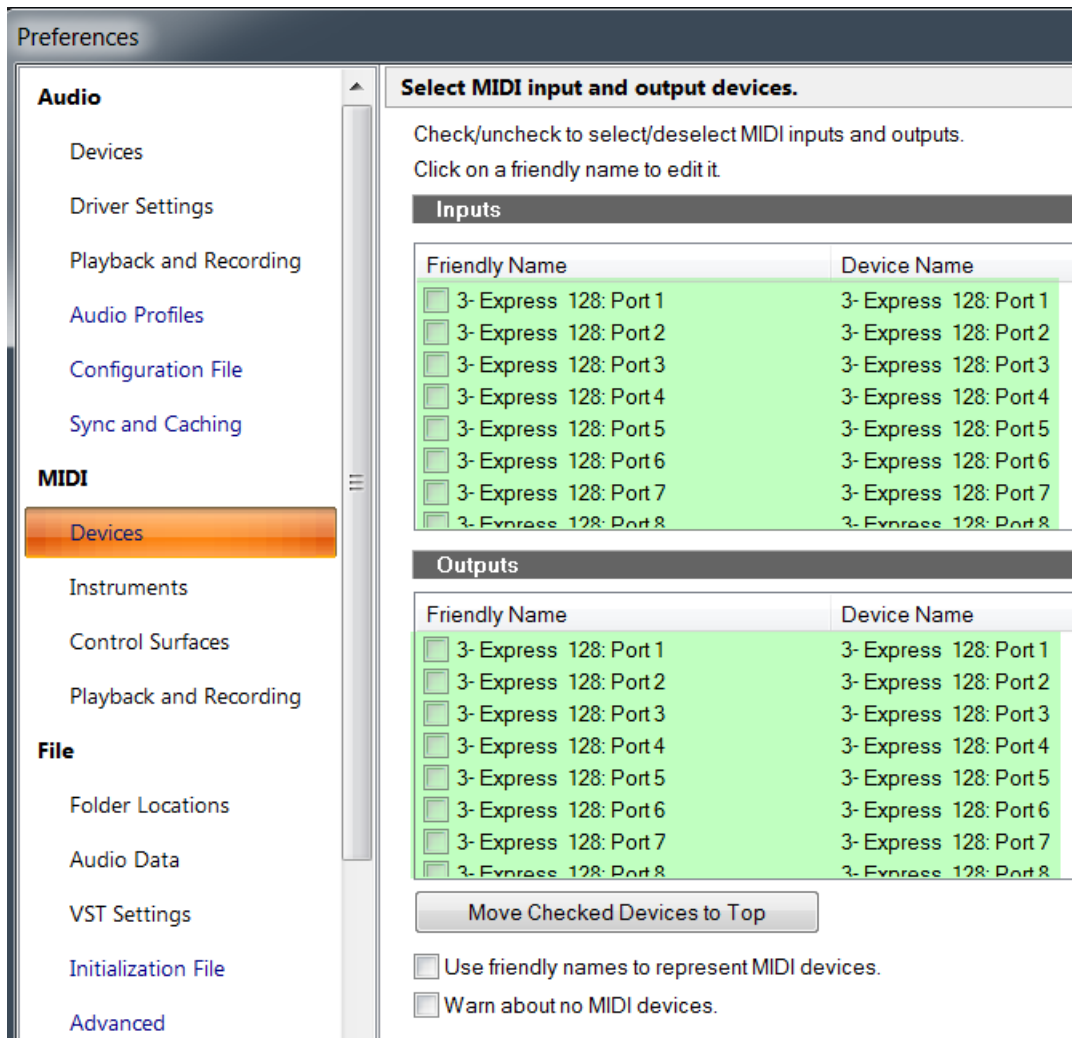


Launch Sonar X2

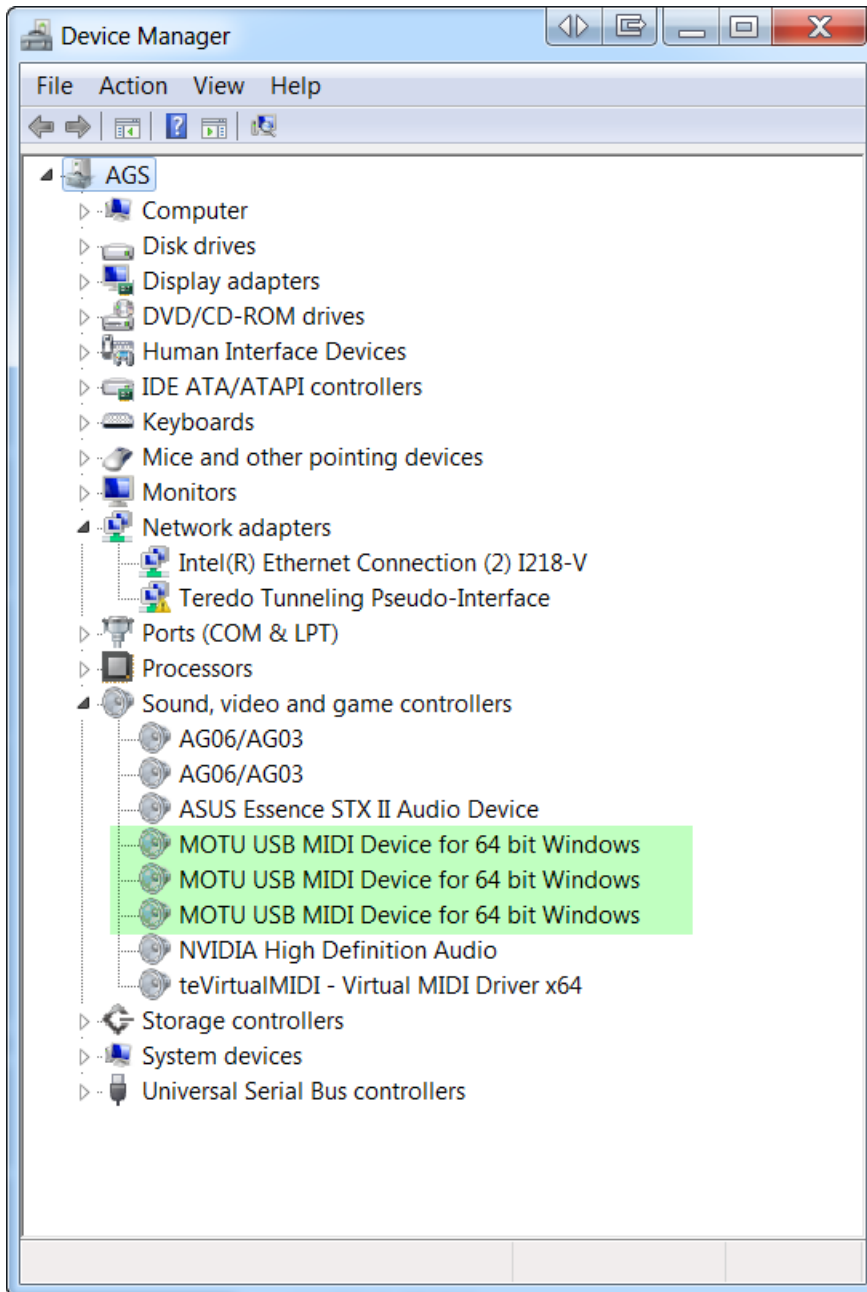
Edit | Preferences | MIDI | Devices

You will see these additional 8 MIDI IN/OUT Ports:

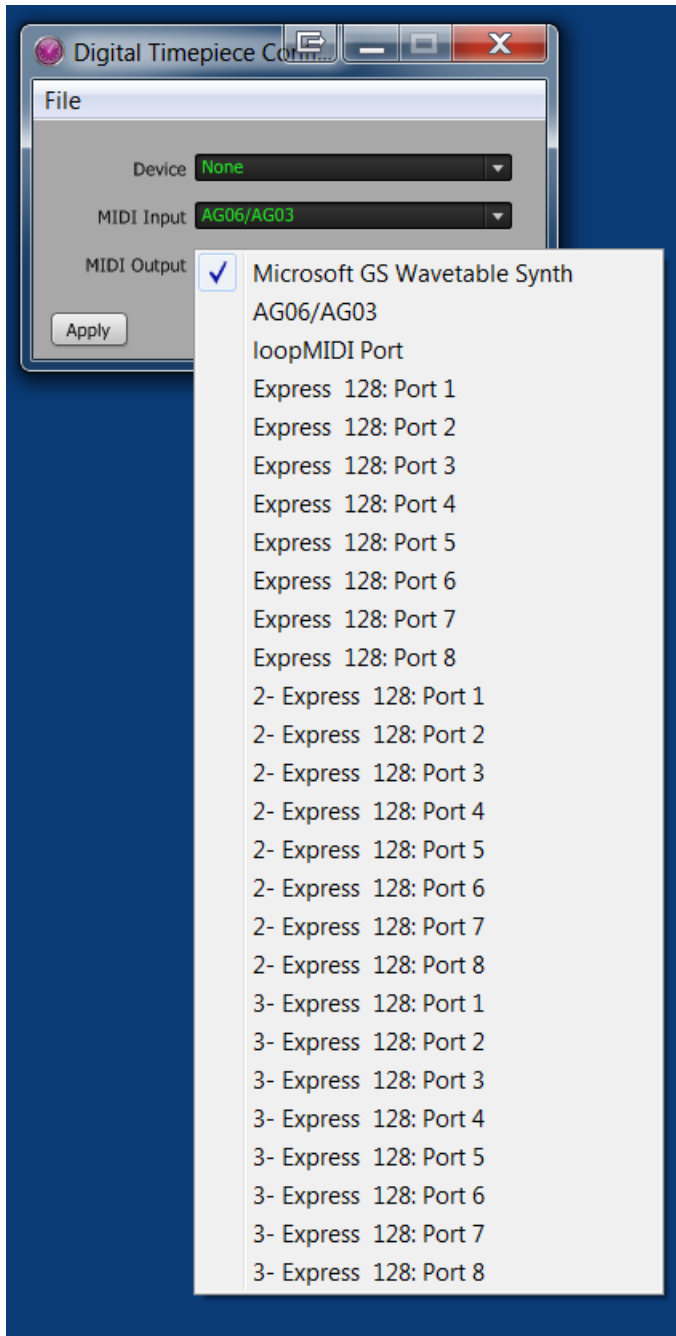
- 3-Express 128: Port 1
- 3-Express 128: Port 2
- 3-Express 128: Port 3
- 3-Express 128: Port 4
- 3-Express 128: Port 5
- 3-Express 128: Port 6
- 3-Express 128: Port 7
- 3-Express 128: Port 8



Device Manager



Open ClockWorks



This completes your installation of the 3 MOTU MIDI Express units on Windows 7 Professional 64-bit SP1.

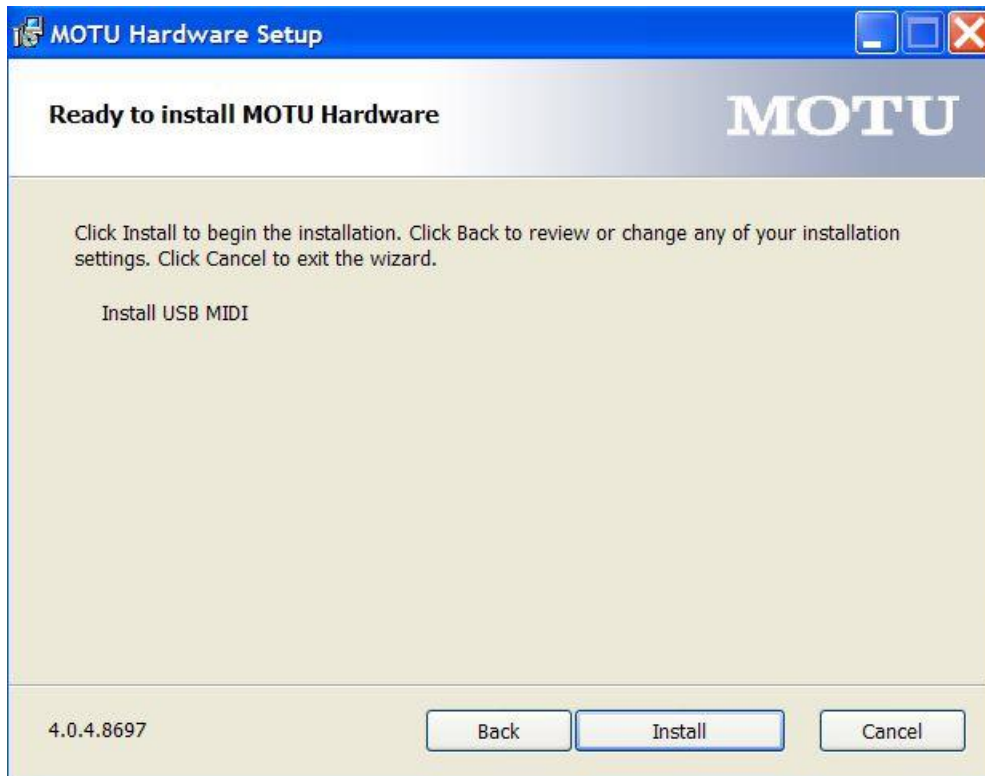
Windows XP Professional (32-bit, SP3) Installation Steps

Disconnect all USB devices except your keyboard and mouse.

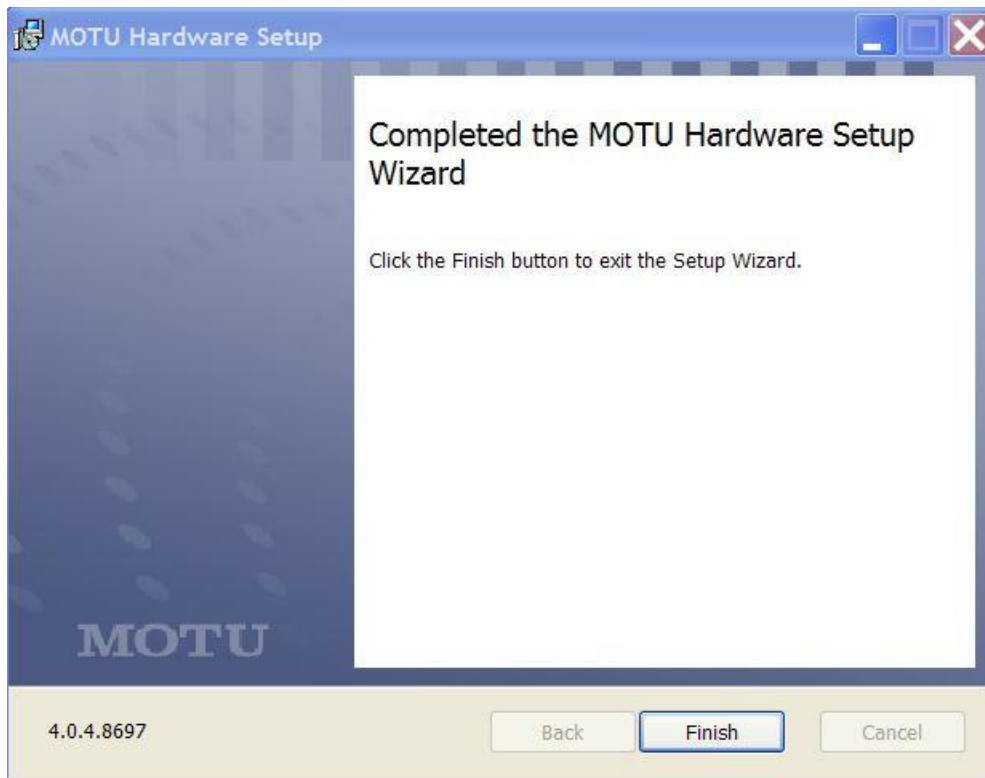
Do not connect the MOTU MIDI Express 128 unit yet!

Run **SetupMIDI.exe**





Continue Anyway



Finish

Connect MOTU MIDI Express 128 Unit #1

Note: The MOTU MIDI Express 128 device needs to be plugged into a powered USB HUB.

Use the Atolla 4-Port Powered USB 3.0 Hub

Connect the MOTU MIDI Express 128 device to Port #1 on the USB Hub.

You would be installing 2 drivers:

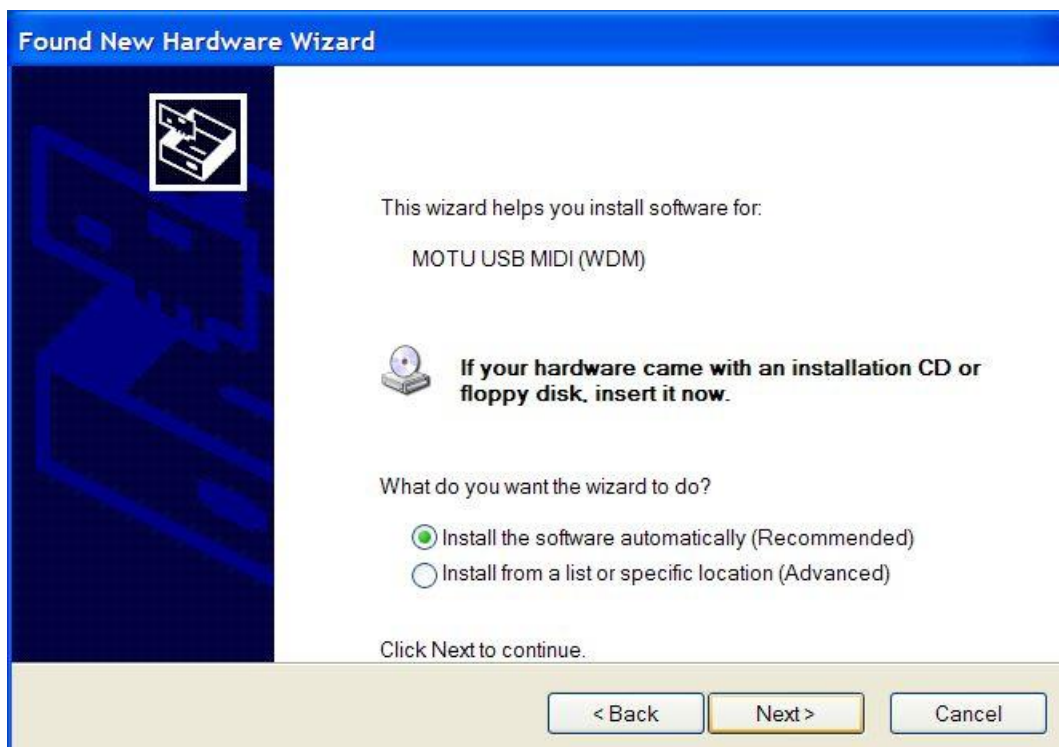
- MOTU USB MIDI (WDM)
- MOTU MIDI Device

The Found New Hardware Wizard will appear twice prompting you to install the above two drivers.

Always select **No, not this time** when Windows attempts to connect to Windows Update.



Install the software automatically





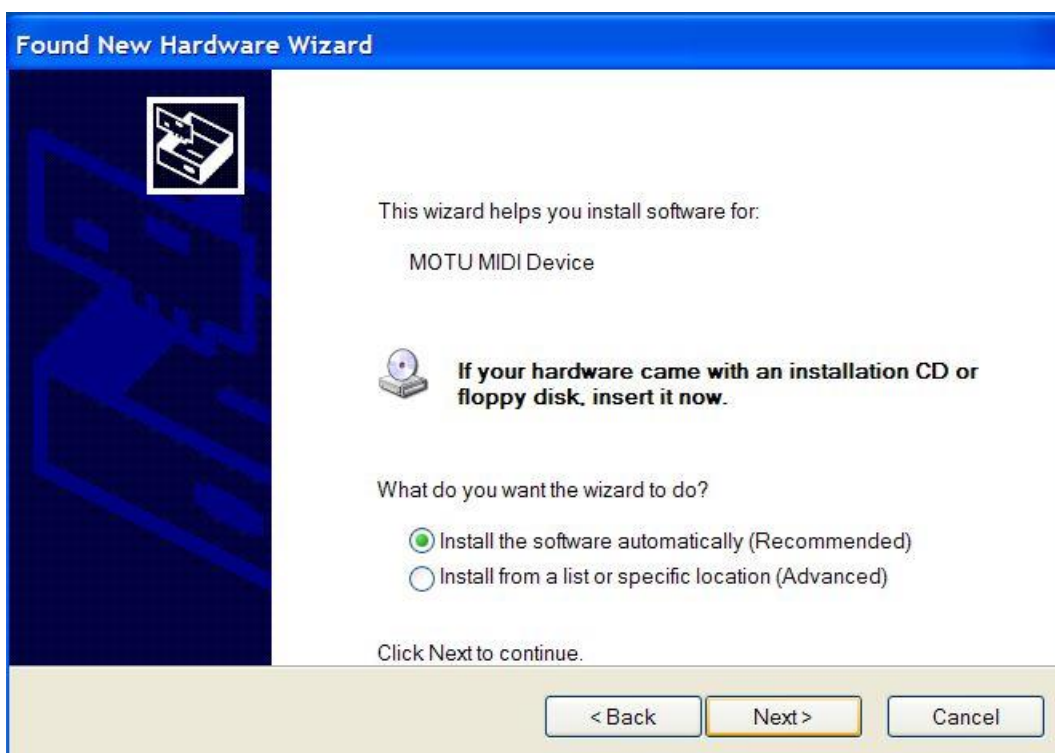
Continue Anyway



Finish



Install the software automatically





Continue Anyway

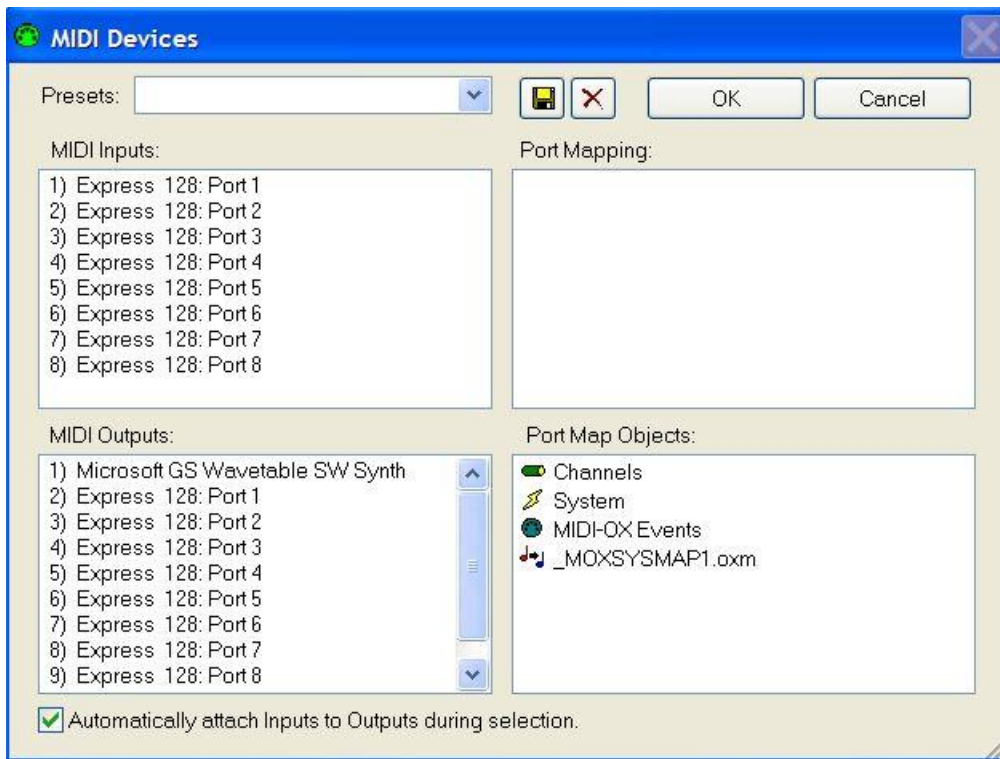


Finish

Launch MIDI-OX

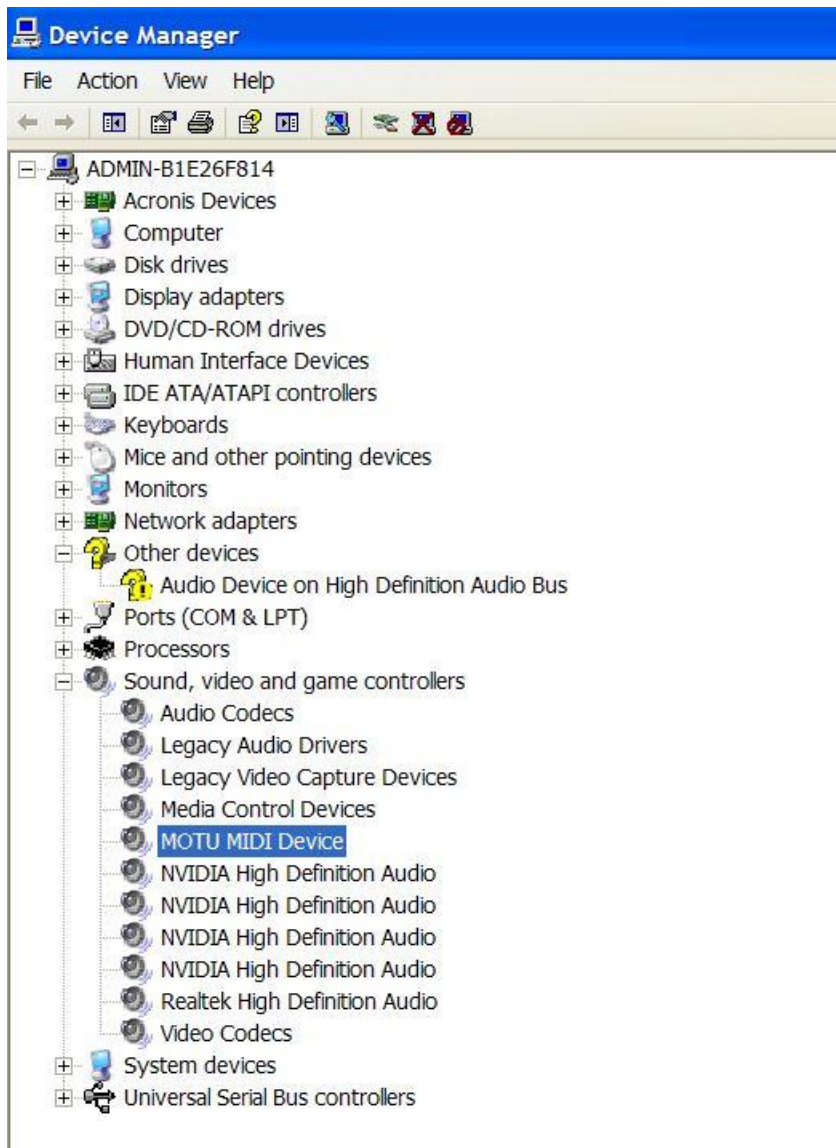


Select MIDI Devices to open

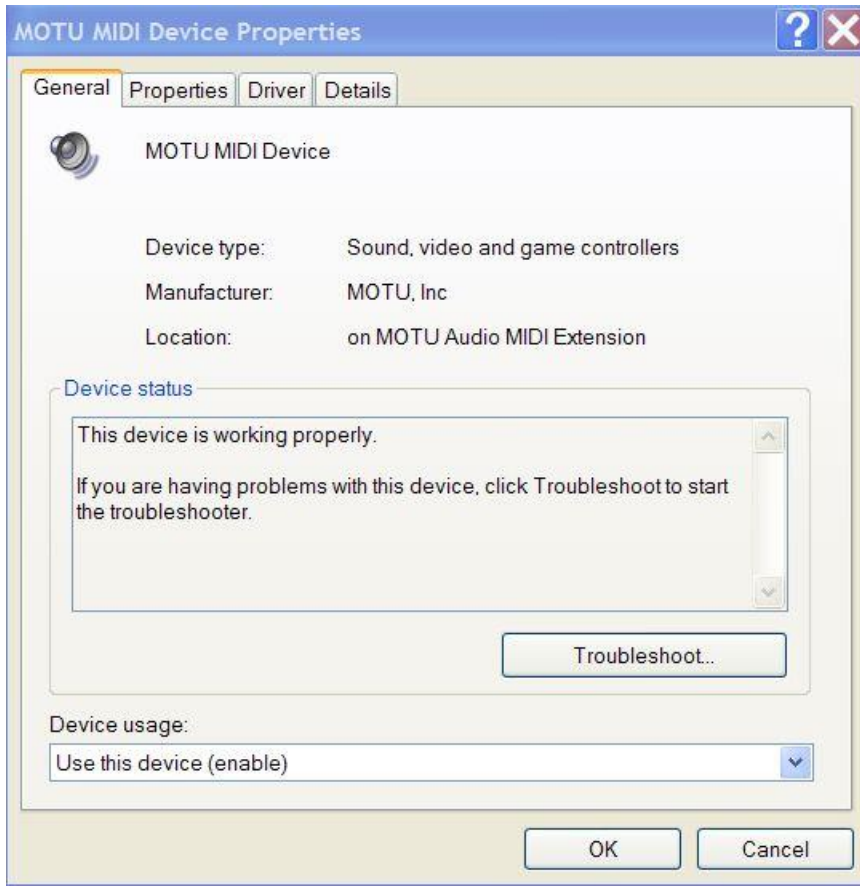


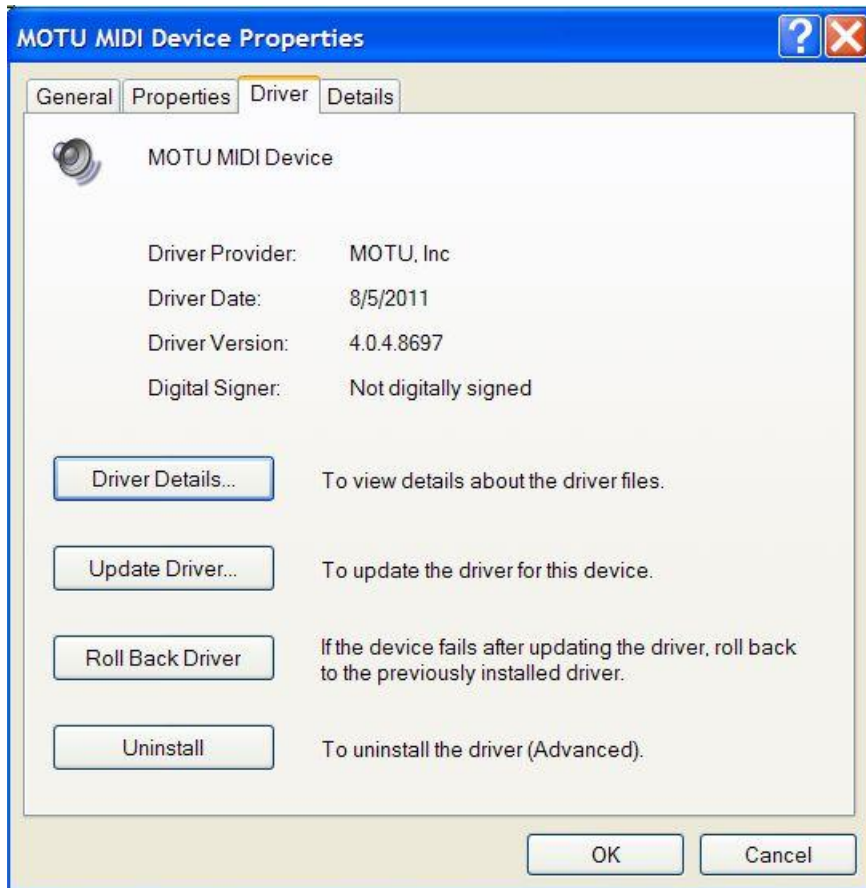
You will get 8 MIDI IN/OUT Ports:

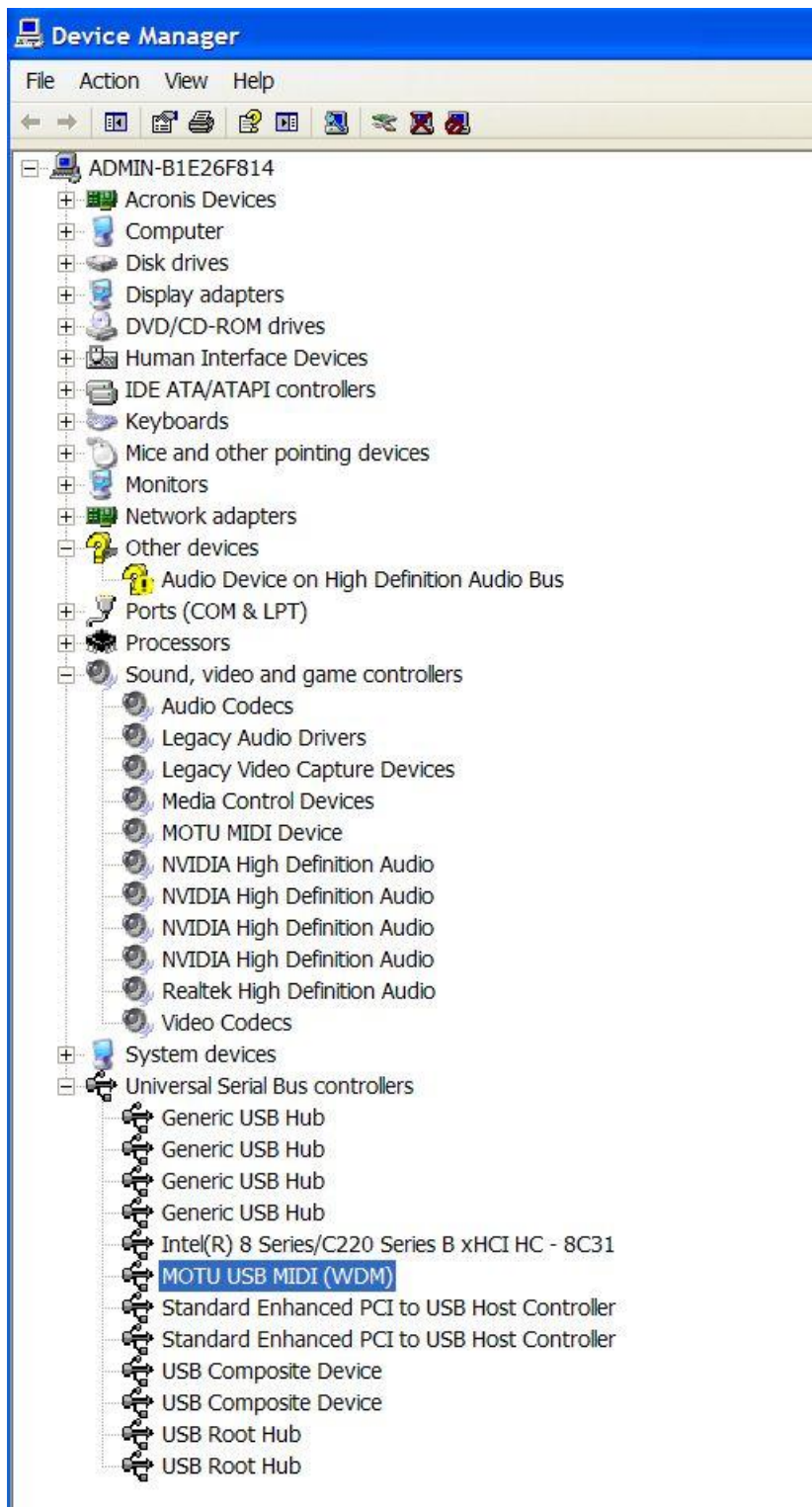
- Express 128: Port 1
- Express 128: Port 2
- Express 128: Port 3
- Express 128: Port 4
- Express 128: Port 5
- Express 128: Port 6
- Express 128: Port 7
- Express 128: Port 8



Properties | General

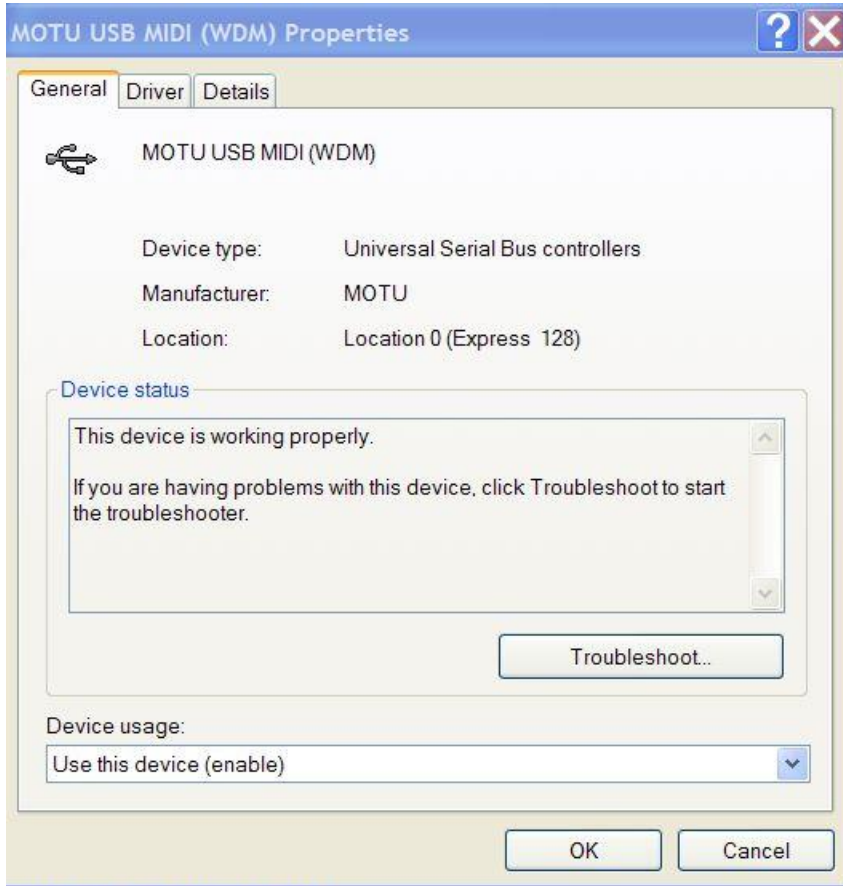


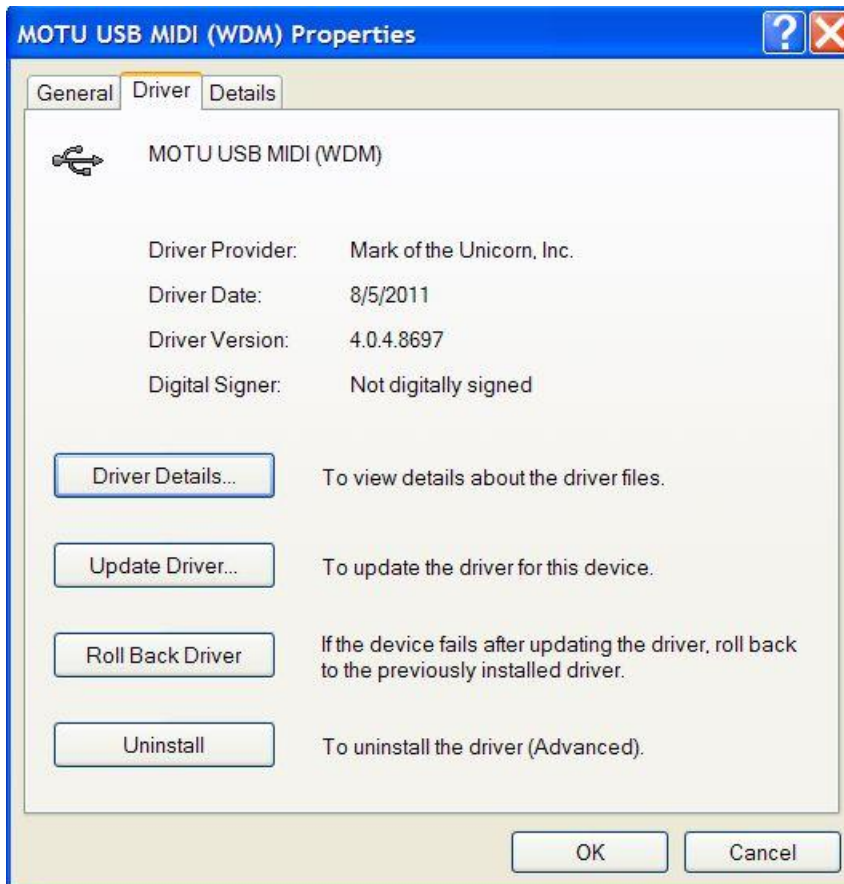




MOTU USB MIDI (WDM)

Properties | General





Add or Remove Programs

Currently installed programs: Show updates Sort by: Name

Acronis True Image Home	Size	157.00MB
Cakewalk VST Adapter 4	Size	0.83MB
CCleaner	Size	3.60MB
CDBurnerXP	Size	13.00MB
dBpoweramp Music Converter	Size	46.30MB
Desktop Restore	Size	0.26MB
DreamStation DXi2		
Intel(R) Management Engine Components	Size	14.09MB
Intel(R) Processor Graphics	Size	3.14MB
IrfanView (remove only)	Size	1.66MB
Microsoft .NET Framework 2.0 Service Pack 1	Size	186.00MB
Microsoft Office 2000 Premium	Size	55.83MB
Microsoft Visual C++ 2010 x86 Redistributable - 10.0.40219	Size	11.14MB
MIDI-OX	Size	1.99MB
MOTU Hardware	Size	<u>3.51MB</u>
Click here for support information.	Used	<u>rarely</u>
To change this program or remove it from your computer, click Change or Remove.		
	Change	Remove
Mozilla Firefox 52.7.4 ESR (x86 en-US)	Size	91.63MB
Mozilla Maintenance Service	Size	0.26MB
Notepad++ (32-bit x86)	Size	7.40MB
NVIDIA Graphics Driver 340.52	Size	83.07MB
NVIDIA HD Audio Driver 1.3.30.1	Size	4.10MB
NVIDIA nView 141.24	Size	19.85MB
NVIDIA PhysX System Software 9.13.1220	Size	110.00MB
REALTEK GbE & FE Ethernet PCI-E NIC Driver	Size	4.55MB
Realtek High Definition Audio Driver	Size	68.10MB
Room EQ Wizard 5.19	Size	19.62MB
SES Driver	Size	0.02MB
SnagIt 7	Size	19.80MB
SONAR 3 Studio Edition	Size	316.00MB
UltraMon	Size	3.65MB

Connect MOTU MIDI Express 128 Unit #2

Connect the 2nd unit to Port #2 on the powered USB 3.0 Hub



Install the software automatically





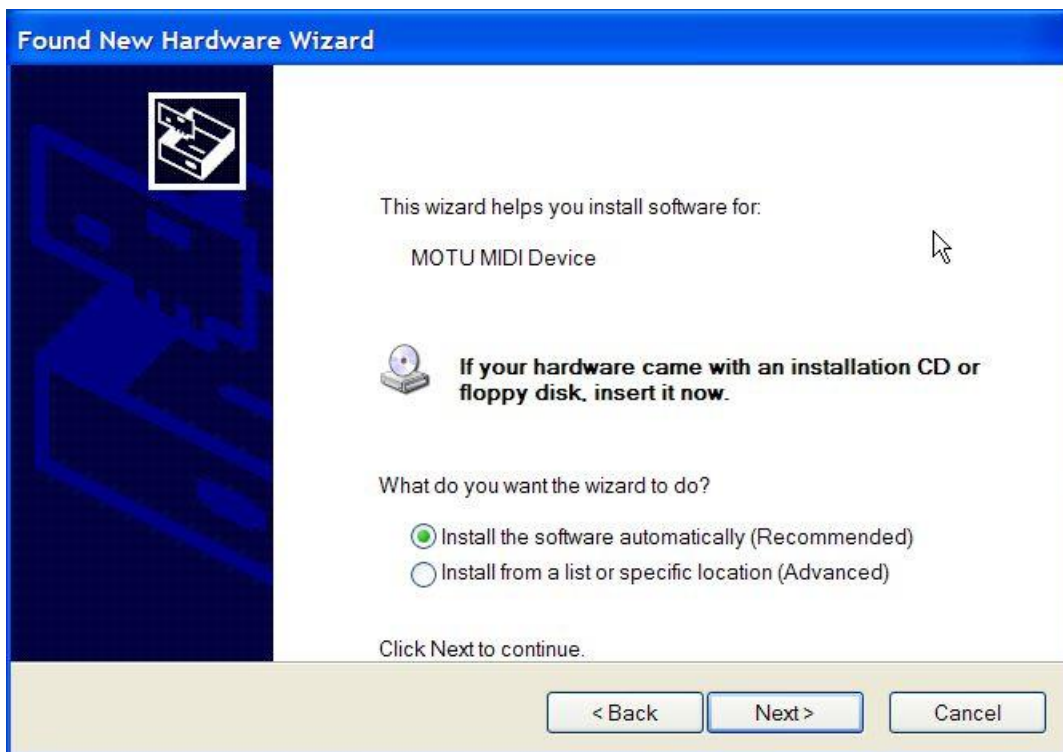
Continue Anyway



Finish



Install the software automatically

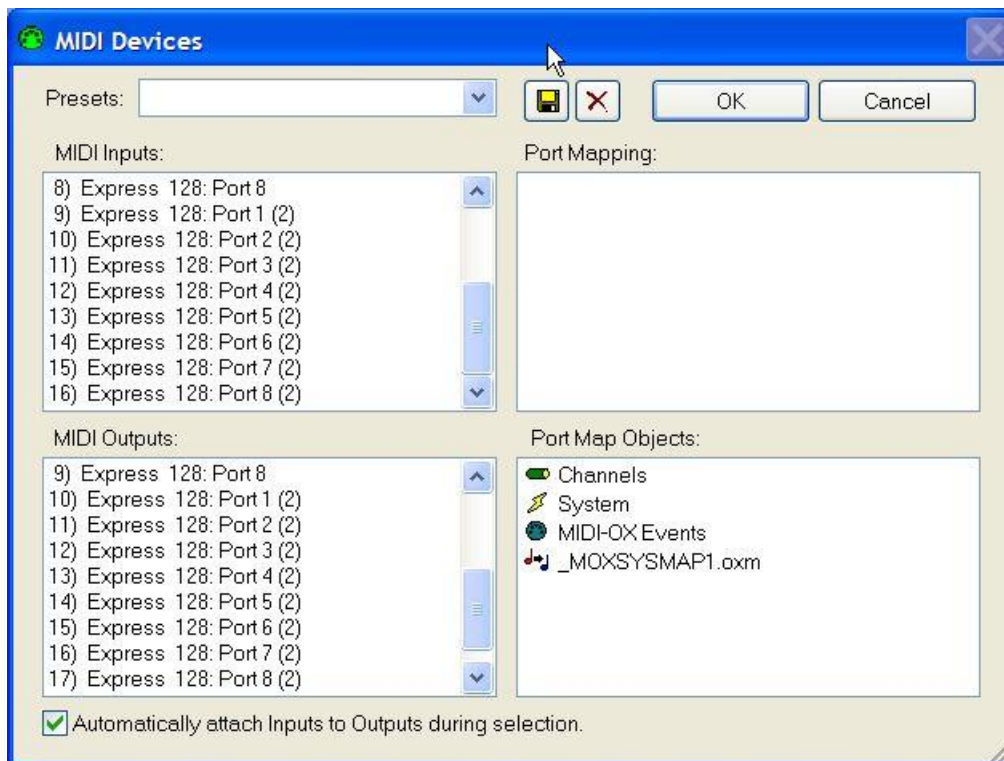




Open MIDI-OX

You will get 8 additional MIDI I/O Ports:

- Express 128: Port 1 (2)
- Express 128: Port 2 (2)
- Express 128: Port 3 (2)
- Express 128: Port 4 (2)
- Express 128: Port 5 (2)
- Express 128: Port 6 (2)
- Express 128: Port 7 (2)
- Express 128: Port 8 (2)



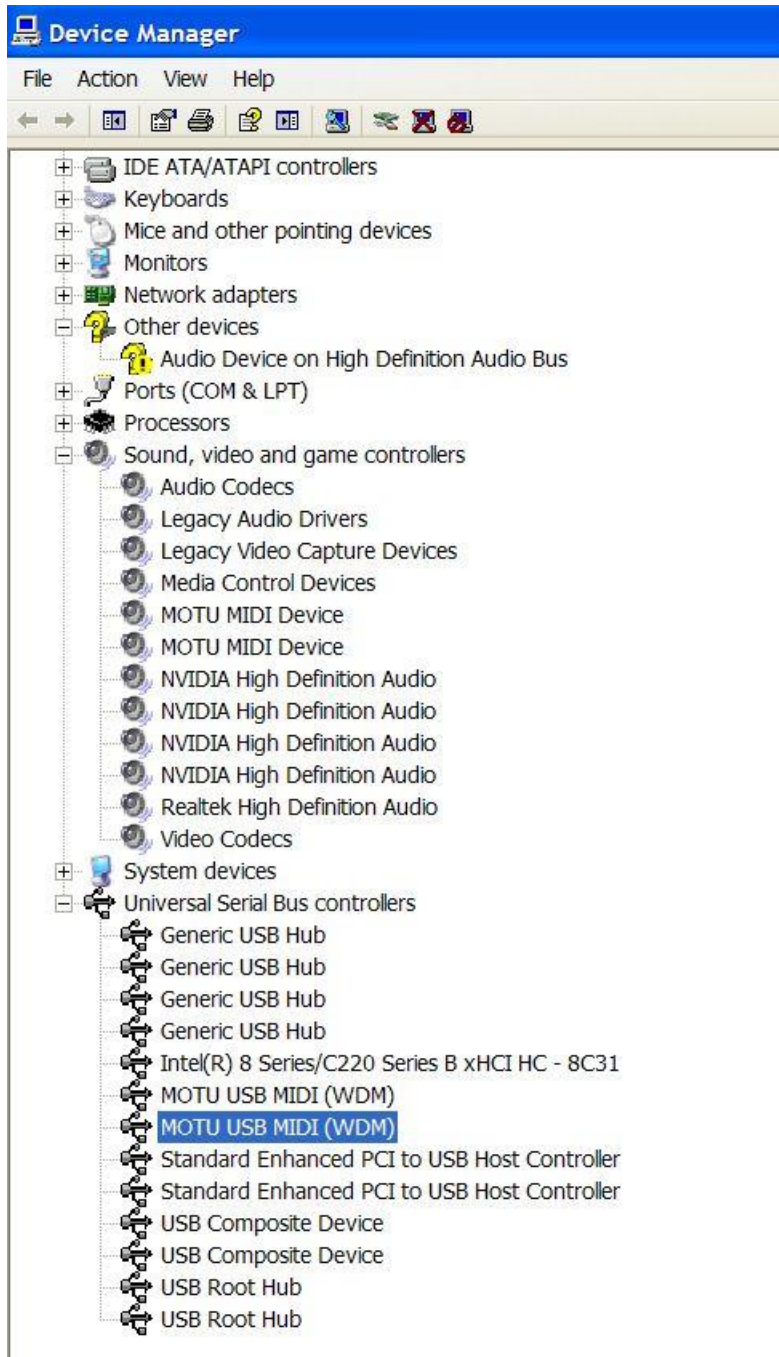
Open Device Manager

You will see a second MOTU MIDI Device



Expand Universal Serial Bus Controllers

You will see a second MOTU USB MIDI (WDM) device

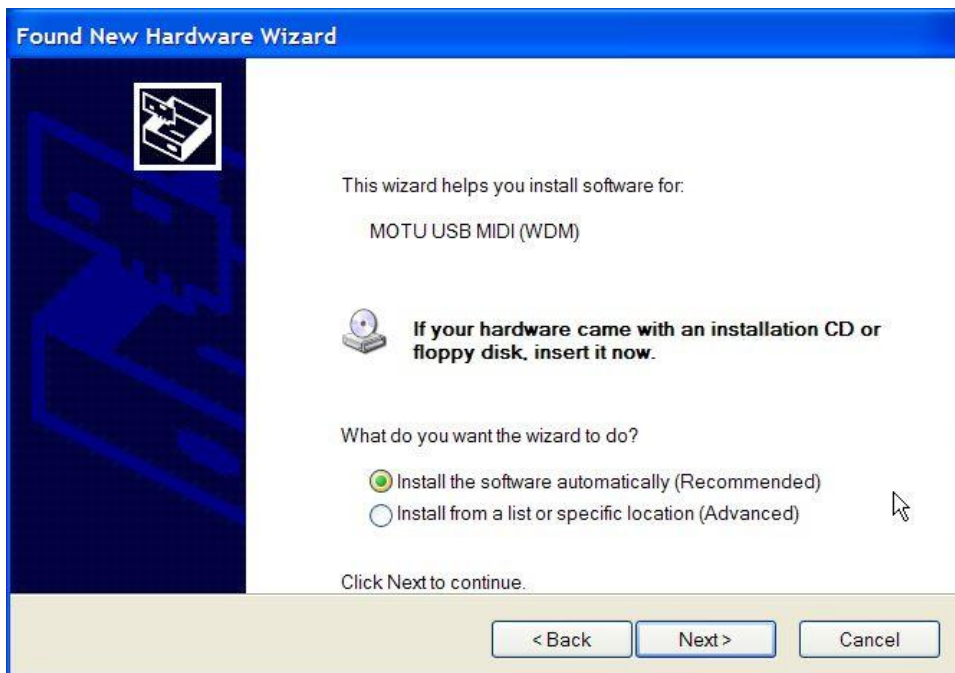


Connect MOTU MIDI Express 128 Unit #3

Connect the 3rd unit to Port #3 on the powered USB 3.0 Hub



Install the software automatically





Continue Anyway



Finish



Install the software automatically

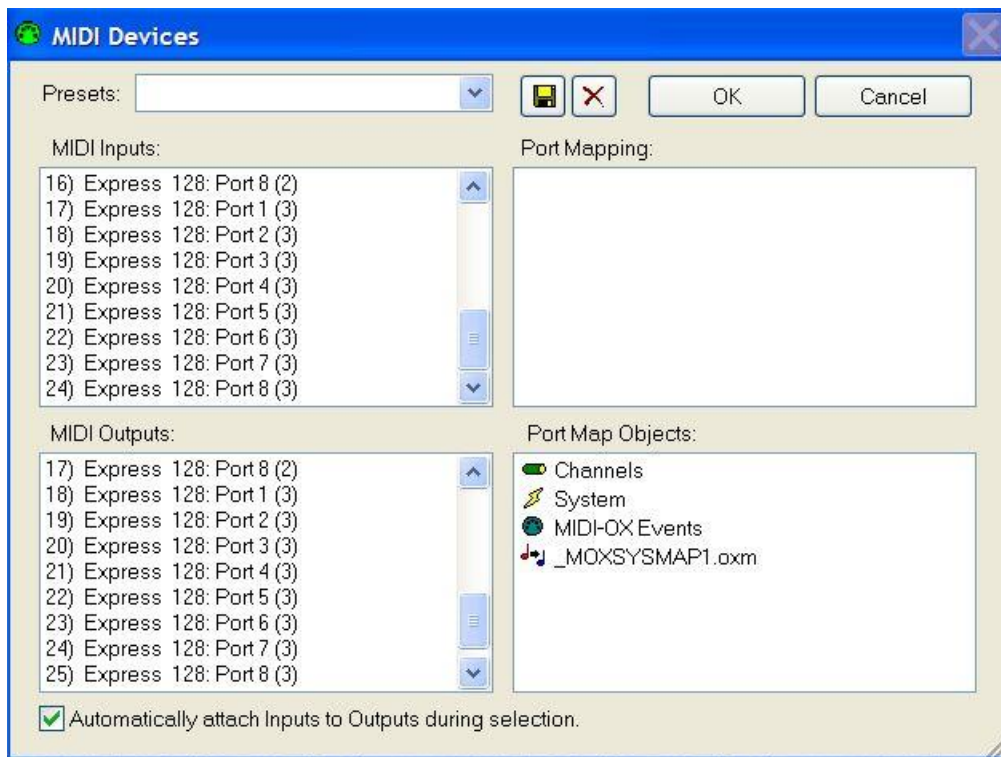




Open MIDI-OX

You will get 8 additional MIDI I/O Ports:

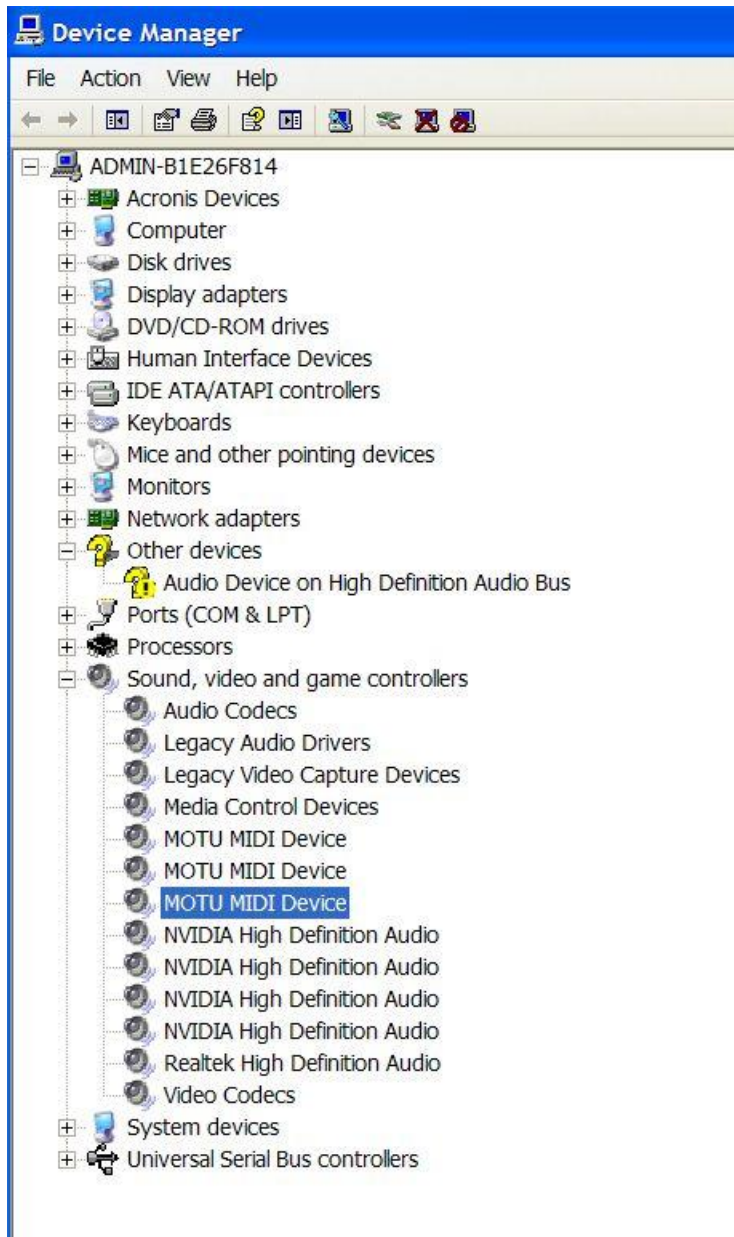
- Express 128: Port 1 (3)
- Express 128: Port 2 (3)
- Express 128: Port 3 (3)
- Express 128: Port 4 (3)
- Express 128: Port 5 (3)
- Express 128: Port 6 (3)
- Express 128: Port 7 (3)
- Express 128: Port 8 (3)



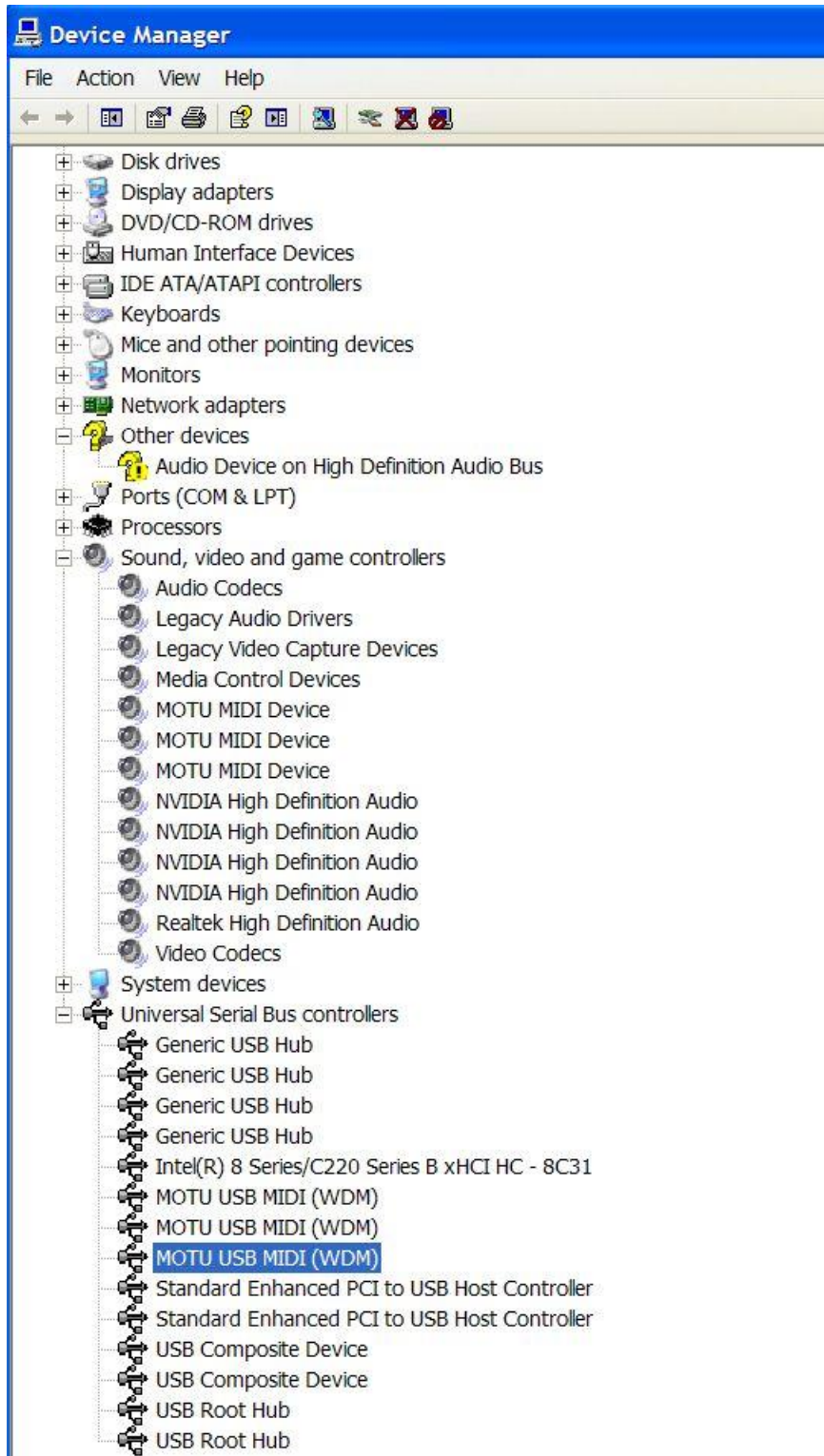
Open Device Manager

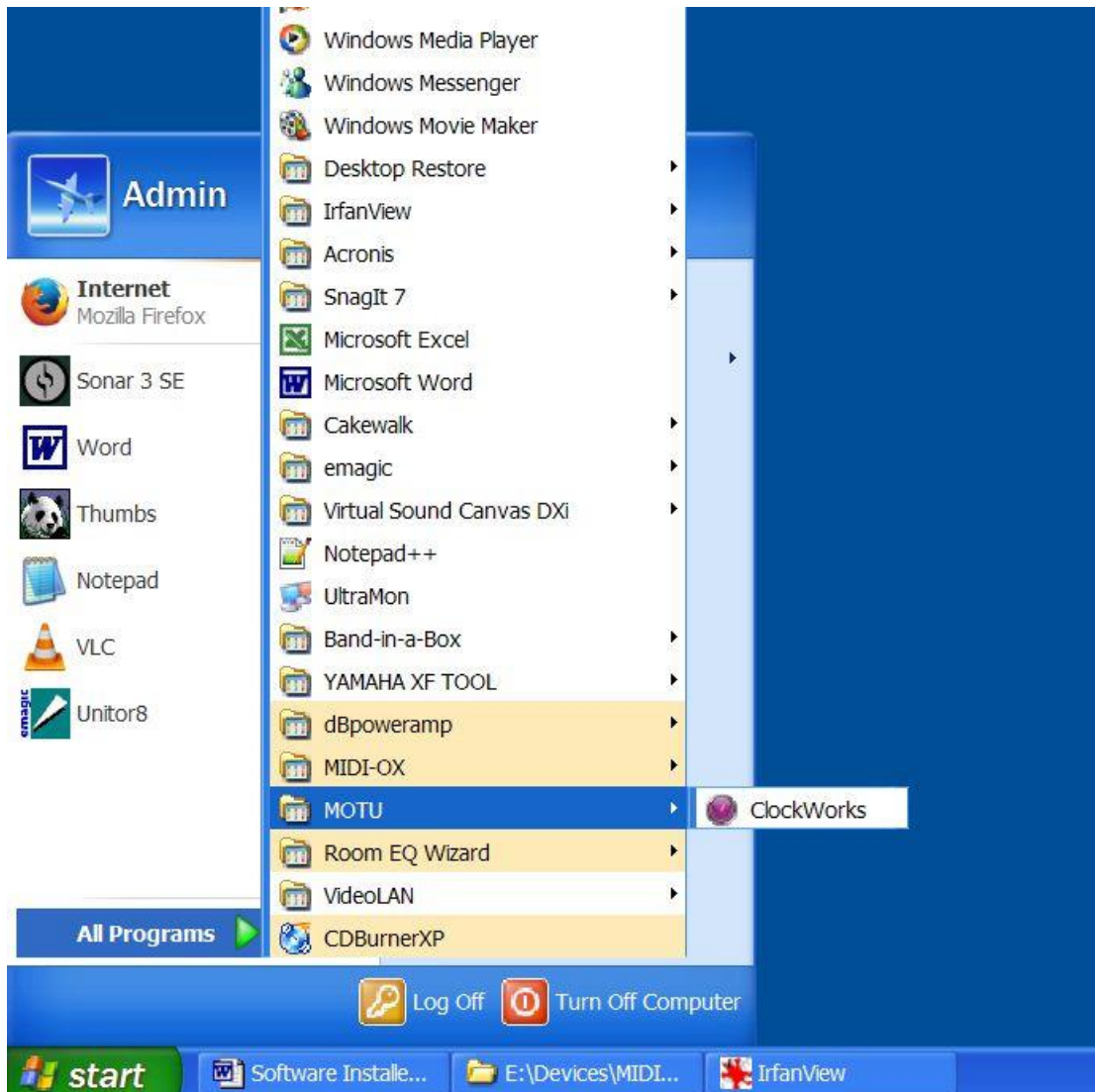
Sound, video and game controllers.

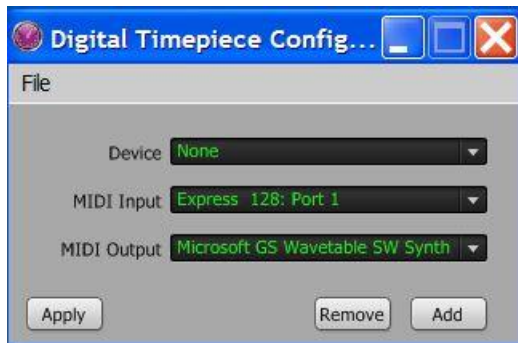
You will see a 3rd MOTU MIDI Device



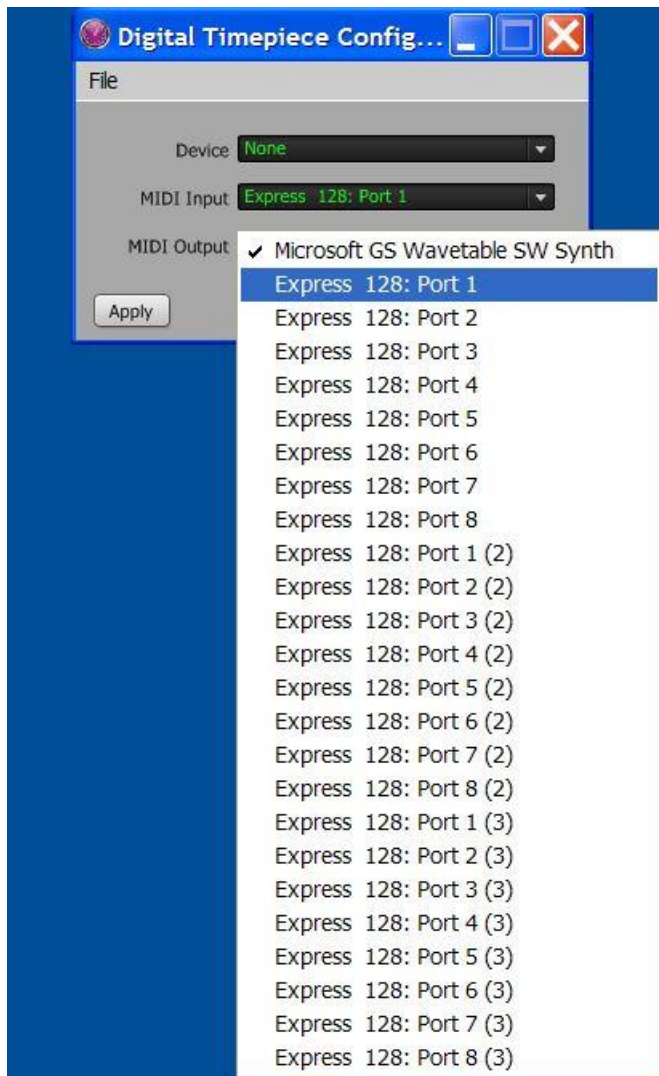
Universal Serial Bus Controllers



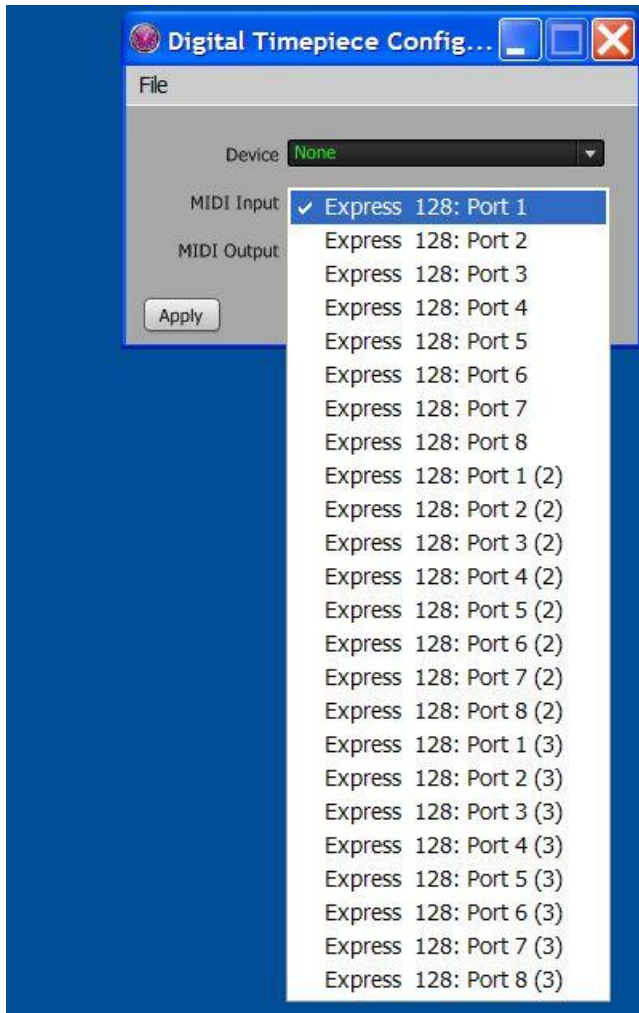




MIDI Output Ports:



MIDI Input Ports:



This completes your installation of the 3 MOTU MIDI Express units on Windows XP Professional 32-bit SP3.

